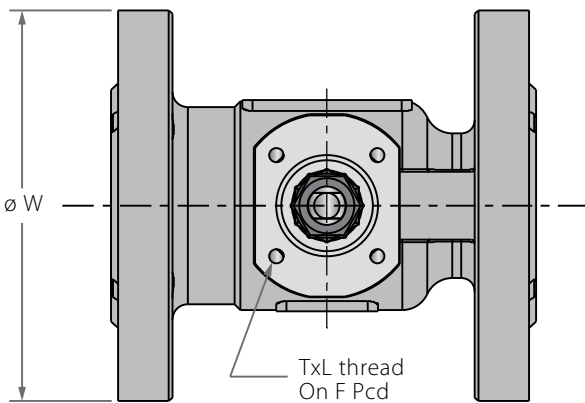
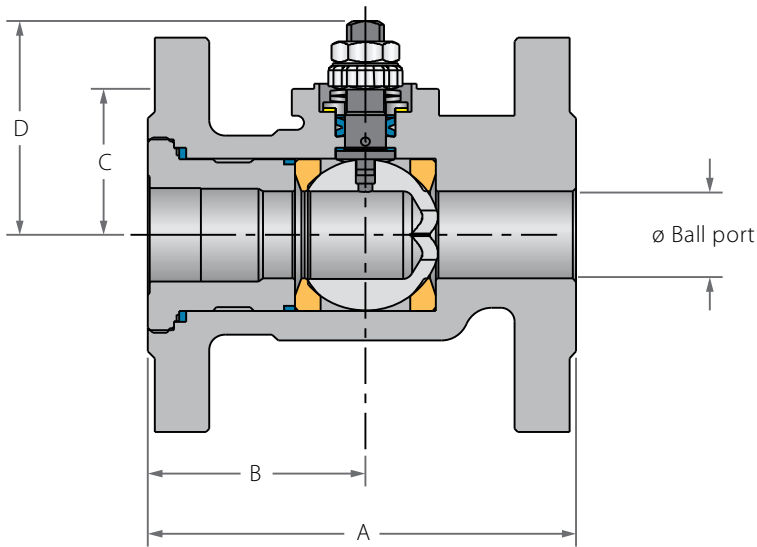
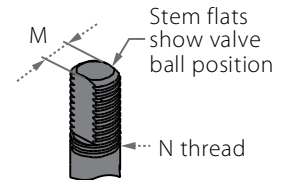
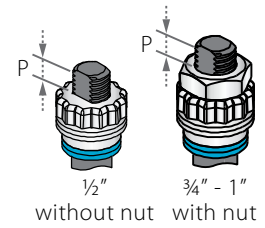


Control Flanged Floating Ball

Valve dimensions



Preparation for actuation

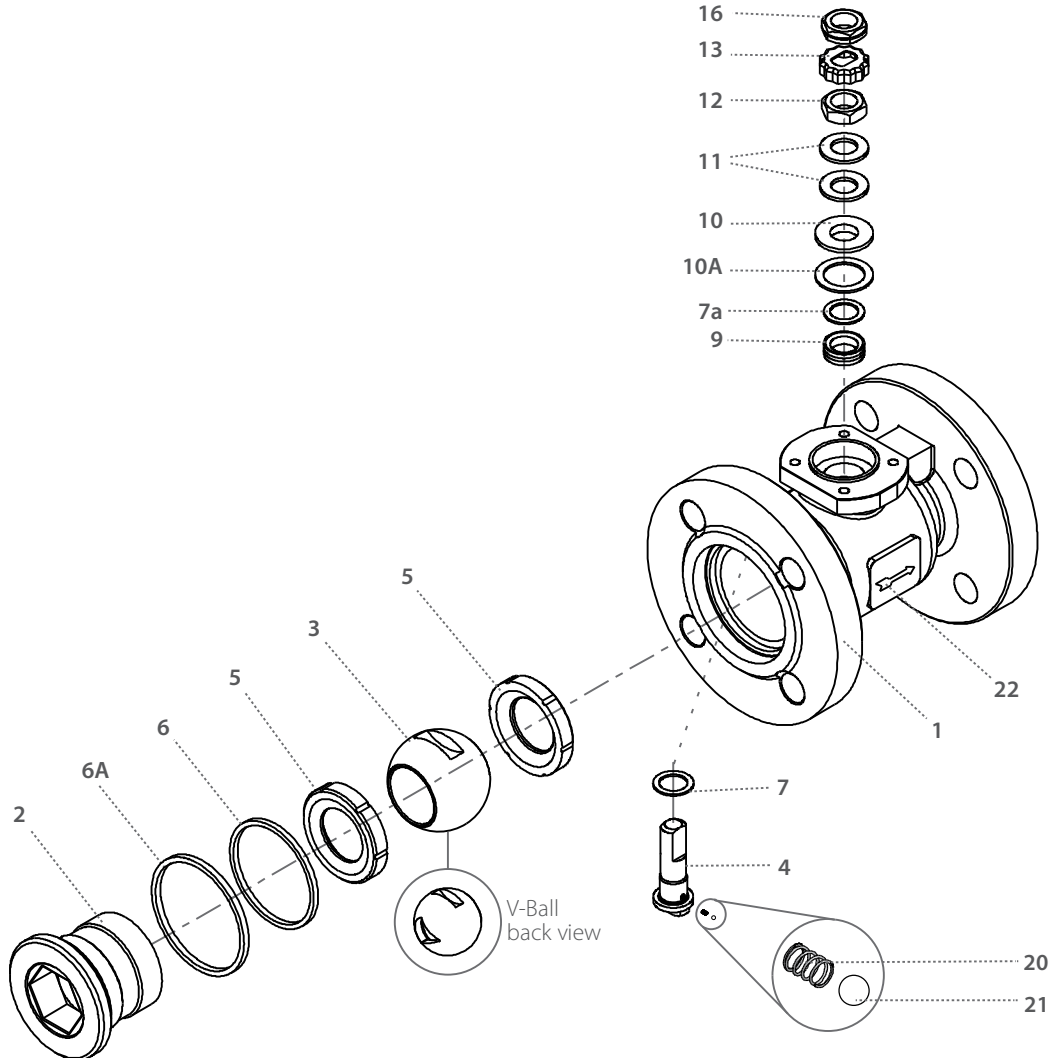


Std. port	Unit	Ball port	A		B	C	D	W	M	N	P	Q	F	TxL	Weight kg/lb		
			F1	F2											F1	F2	
DN15	mm	14.30	130.00	115.00	48.00	31.50	40.50	5.54	5.54	1/2" UNF	6.65	95.00	(F03)	36.00	M5x10	2.2	2.1
1/2"	inch	0.56	5.12	4.53	1.89	1.24	1.59	0.22	0.22		0.26	3.74		1.42		4.80	4.60
DN20	mm	20.60	150.00	120.00	58.00	38.30	56.50	7.54	7.54	3/4" UNF	7.40	105.00	(F04)	42.00	M5x10	3.2	3
3/4"	inch	0.81	5.91	4.72	2.28	1.51	2.22	0.30	0.30		0.29	4.13		1.65		7.00	6.60
DN25	mm	25.40	160.00	125.00	63.50	41.80	61.00	7.54	7.54	7/16" UNF	7.40	115.00	(F04)	42.00	M5x10	4.2	4
1"	inch	1.00	6.30	4.92	2.50	1.65	2.40	0.30	0.30		0.29	4.53		1.65		9.20	8.8



Control Flanged Floating Ball

Valve dimensions



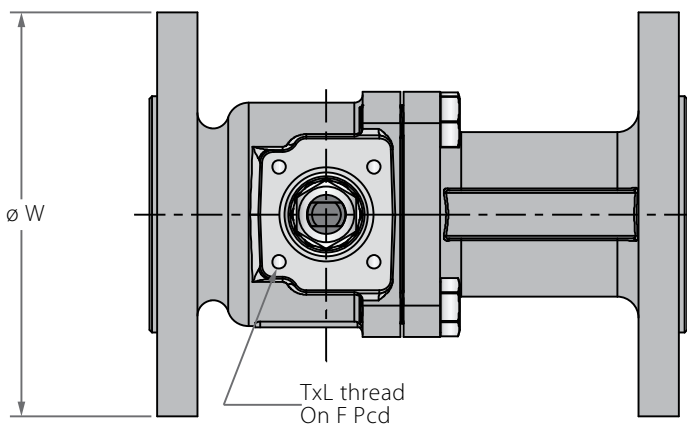
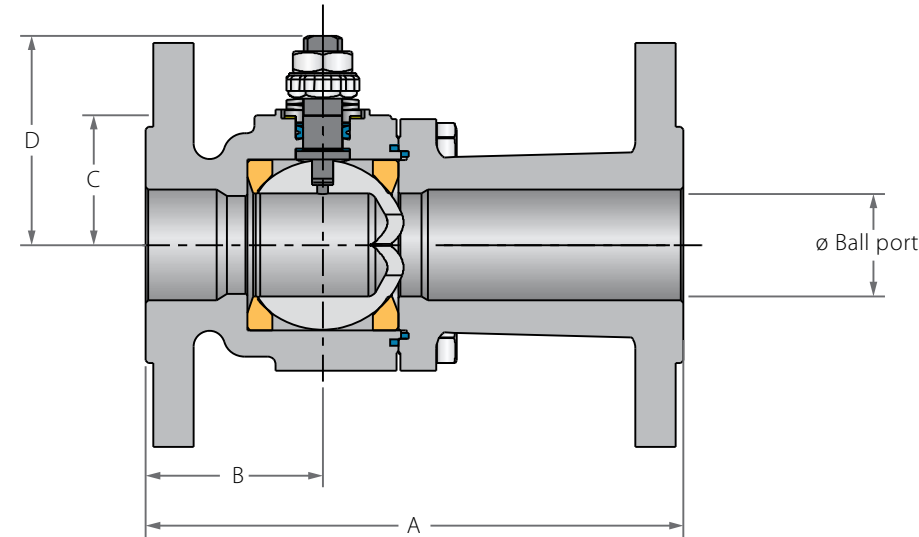
Item	Description	Material specification	Qty.
1	Body	Acc. Ordering Code	1
2	End	Acc. Ordering Code	1
3	Ball	Acc. Ordering Code	1
4	Stem	Acc. Ordering Code	1
5*	Seat	Acc. Ordering Code	2
6*	Body seal	PTFE	1
6A*	Outer seal	Acc. Ordering Code	1
7	Stem thrust seal	CF PEEK, PCTFE, CF PTFE	1
7a*	Anti-abrasion ring	CF PEEK, PCTFE, CF PTFE	1
9*	Stem seal	CF PTFE, TFM	1
10	Follower	S. Steel	1

Item	Description	Material specification	Qty.
10A	Slide bearing	S. Steel	1
11	Disc spring	S. Steel	2
12	Stem nut	S. Steel	1
13	Locking clip	S. Steel	1
16	Handle nut	S. Steel	1
20	Anti-static spring	S. Steel	1
21	Anti-static plunger	S. Steel	1
22	Arrow Flow	S. Steel	2
23	Tag (not shown)	S. Steel	1

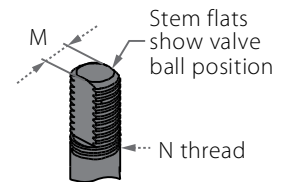
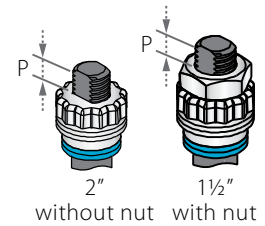
* Standard items supplied in repair kits

Control Flanged Floating Ball

Valve dimensions



Preparation for actuation

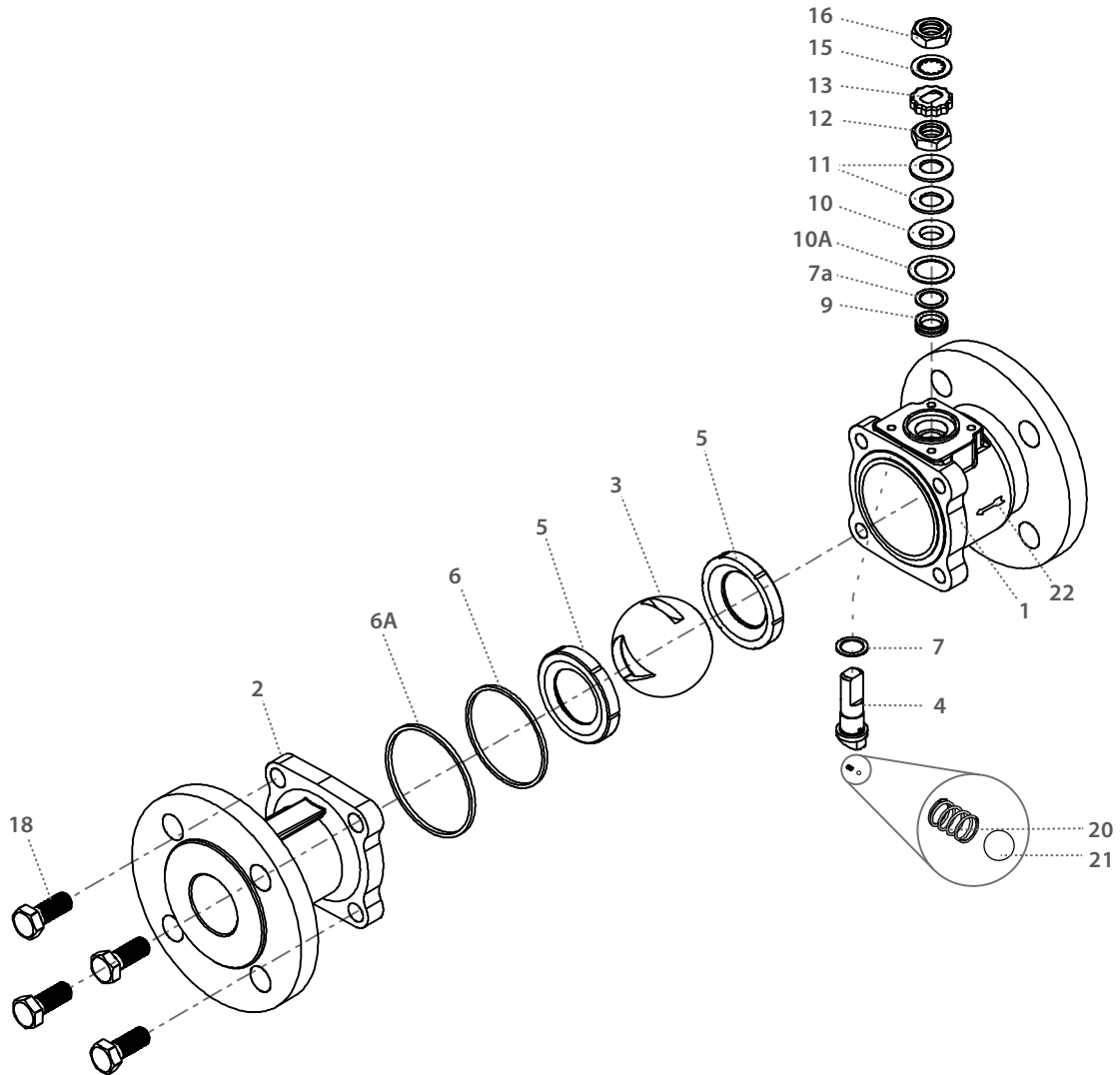


Std. port	Unit	Ball port	A		B	C	D	W	M	N	P	F	TxL	Weight kg/lb		
			F1	F4										F1	F4	
DN40	mm	38.10	200.00	140.00	48.30	65.90	77.80	150.00	8.70	1/8" UNF	19.60	(F05)	50.00	M6x12	10.90	10.30
1½"	inch	1.50	7.87	5.51	1.90	2.59	3.06	5.91	0.34		0.77		1.97			24.00
DN50	mm	50.00	230.00	150.00	78.00	60.70	119.00	165.00	8.70	M16	11.00	(F07)	70.00	M8x12	15.00	13.00
2"	inch	2.00	9.06	5.91	3.07	2.39	4.69	6.50	0.34		0.43		2.76			33.00



Control Flanged Floating Ball

Valve dimensions



Item	Description	Material specification	Qty.
1	Body	Acc. Ordering Code	1
2	End	Acc. Ordering Code	1
3	V-Ball	Acc. Ordering Code	1
4	Stem	Acc. Ordering Code	1
5*	Seat	Acc. Ordering Code	2
6*	Body seal	PTFE	1
6A*	Outer seal	Acc. Ordering Code	1
7*	Stem thrust seal	CF PEEK, PCTFE, CF PTFE	1
7a*	Anti-abrasion ring	CF PEEK, PCTFE, CF PTFE	1
9*	Stem seal	CF PTFE, TFM	1
10	Follower	S. Steel	1
10A	Slide bearing	S. Steel	1

Item	Description	Material specification	Qty.
11	Disc spring	S. Steel	2
12	Stem nut	S. Steel	1
13	Locking clip	S. Steel	1
15	Serrated washer	S. Steel	1
16	Handle nut	S. Steel	1
18	Body bolt	S. Steel	4-8
20	Anti-static spring	S. Steel	1
21	Anti-static plunger	S. Steel	1
22	Arrow Flow	S. Steel	2
23	Tag (not shown)	S. Steel	1

* Standard items supplied in repair kits