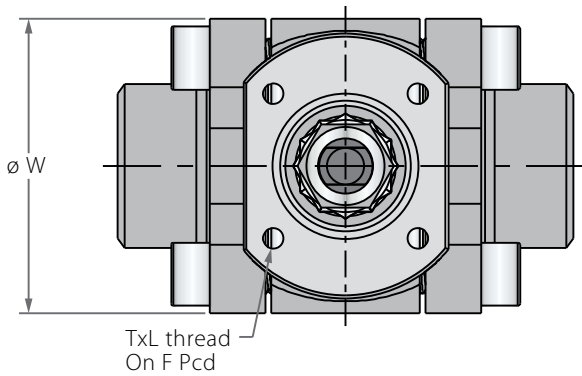
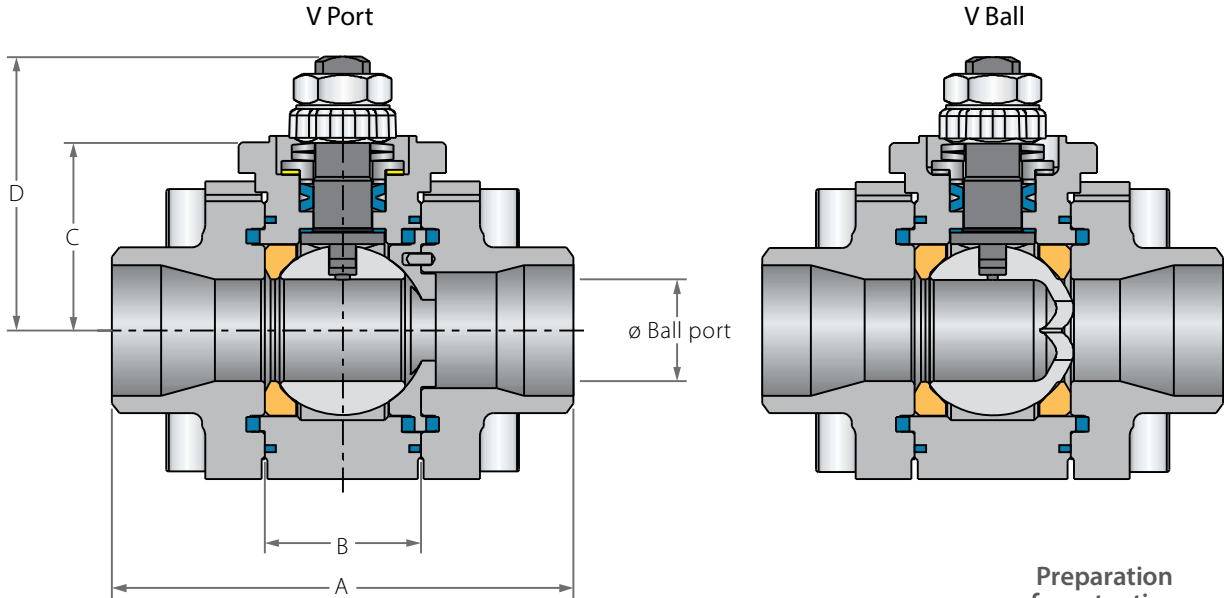
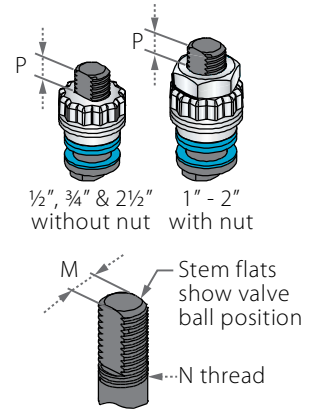


Control Floating Ball 3 Piece

Valve dimensions



Preparation for actuation



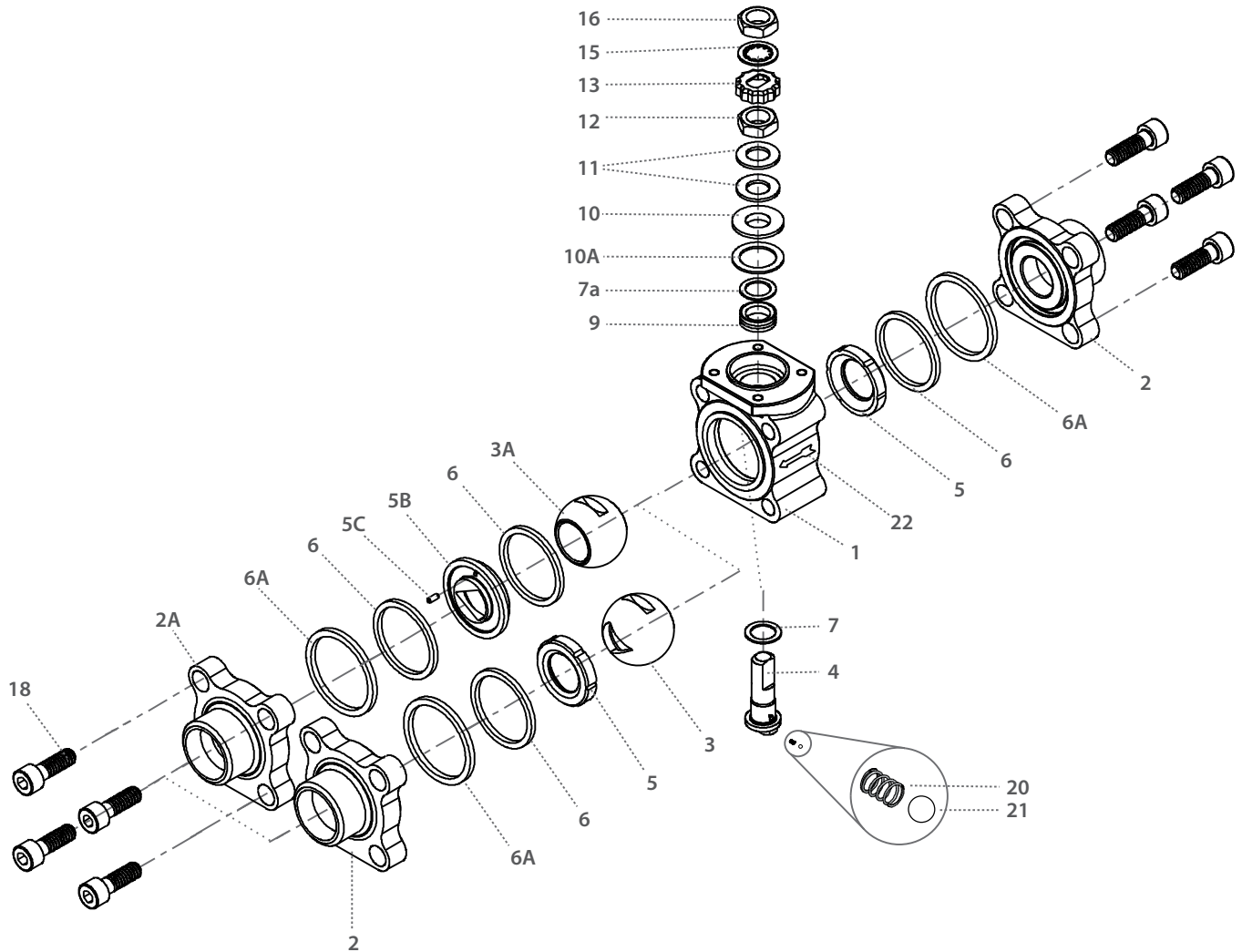
Valve Face To Face sizes are according to Habonim catalog data only, for Extended-weald/Flanged/Tri-clamp end see Face To Face sizes page.

Std. port	Full port	Unit	Ball port	A	B	C	D	W	M	N	P	F	TxL	Weight kg/lb	
DN15	DN10	mm	11.15	66.00	20.60	29.00	38.70	47.00	5.54	1/2" UNF	6.65	(F03)	36.00	M5X10	0.60
1/2"	3/8"	inch	0.44	2.60	0.81	1.14	1.52	1.85	0.22	1/2" UNF	0.26	1.42	M5X10	1.33	
DN20	DN15	mm	14.30	70.60	24.50	31.40	40.30	53.70	5.54	3/4" UNF	6.65	(F03)	36.00	M5X10	0.80
3/4"	1/2"	inch	0.56	2.78	0.97	1.24	1.59	2.11	0.22	3/4" UNF	0.26	1.42	M5X10	1.77	
DN25	DN20	mm	20.60	93.70	31.70	38.20	55.60	63.70	7.54	1/2" UNF	7.40	(F04)	42.00	M5X10	1.60
1"	3/4"	inch	0.81	3.69	1.25	1.50	2.19	2.51	0.30	1/2" UNF	0.29	1.65	M5X10	3.54	
DN32	DN25	mm	25.40	108.00	41.30	42.70	60.20	71.70	7.54	3/4" UNF	7.40	(F04)	42.00	M5X10	2.50
1 1/4"	1"	inch	1.00	4.25	1.62	1.68	2.37	2.82	0.30	3/4" UNF	0.29	1.65	M5X10	5.53	
DN40	DN32	mm	31.80	115.50	48.40	43.60	73.00	86.70	8.71	1/2" UNF	8.50	(F05)	50.00	M6X12	3.60
1 1/2"	1 1/4"	inch	1.25	4.55	1.91	1.72	2.87	3.41	0.34	1/2" UNF	0.33	1.97	M6X12	7.96	
DN50	DN40	mm	38.10	128.00	56.30	48.30	77.80	96.90	8.71	3/4" UNF	8.50	(F05)	50.00	M6X12	4.50
2"	1 1/2"	inch	1.50	5.04	2.22	1.90	3.06	3.82	0.34	3/4" UNF	0.33	1.97	M6X12	9.95	
DN50	DN50	mm	50.80	158.00	72.60	70.00	88.10	108.00	8.71	1/2" UNF	13.50	(F07)	70.00	M8X12	9.50
2 1/2"	2"	inch	2.00	6.22	2.86	2.76	3.47	4.25	0.34	1/2" UNF	0.53	2.76	M8X12	21.0	



Control Floating Ball 3 Piece

Valve dimensions



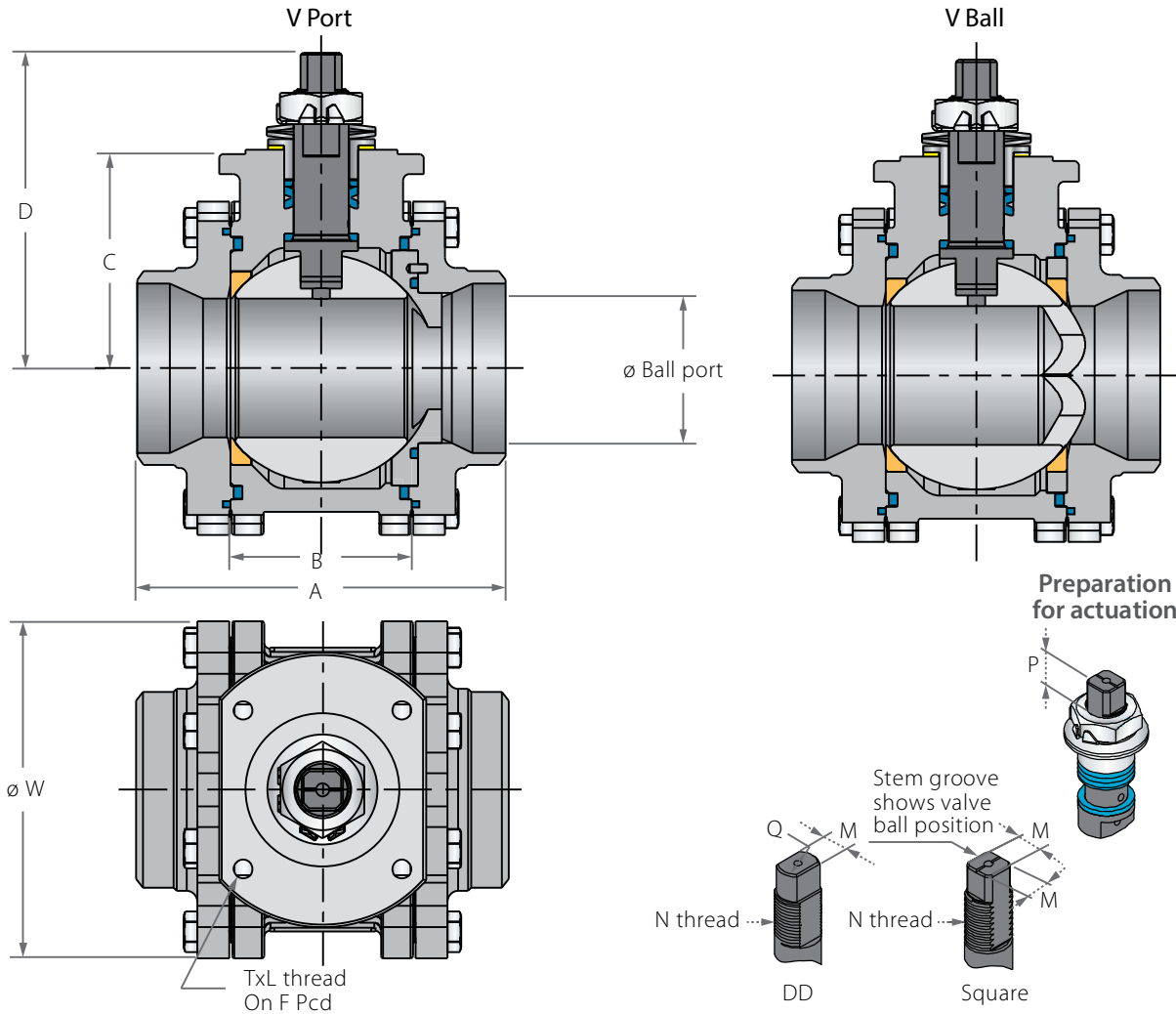
Item	Description	Material specification	Qty.
1	Body	Acc. Ordering Code	1
2	End	Acc. Ordering Code	1-2
2A	V- Port End	Acc. Ordering Code	1
3	V ball	Acc. Ordering Code	1
3A	Ball	Acc. Ordering Code	1
4	Stem	Acc. Ordering Code	1
5*	Seat	Acc. Ordering Code	1-2
5B	V seat	Acc. Ordering Code	1
5C	Dowel Pin	S. Steel	1
6*	Body seal	Acc. Ordering Code	2-3
6A*	Outer seal	Acc. Ordering Code	2
7*	Stem thrust seal	PEEK, CF PEEK, PCTFE	1

Item	Description	Material specification	Qty.
7a*	Anti-abrasion ring	PEEK, CF PEEK, PCTFE	1
9*	Stem seal	CF PTFE, TFM	1
10	Follower	S. Steel	1
10A*	Slide bearing	S. Steel	1
11	Disc spring	S. Steel	2
12	Stem nut	S. Steel	1
13	Locking clip	S. Steel	1
16	Handle nut	S. Steel	1
18	Body bolts	S. Steel	8
22	Arrow flow	S. Steel	1
23	Tag (not shown)	S. Steel	1

* Repair kit components

Control Floating Ball 3 Piece

Valve dimensions



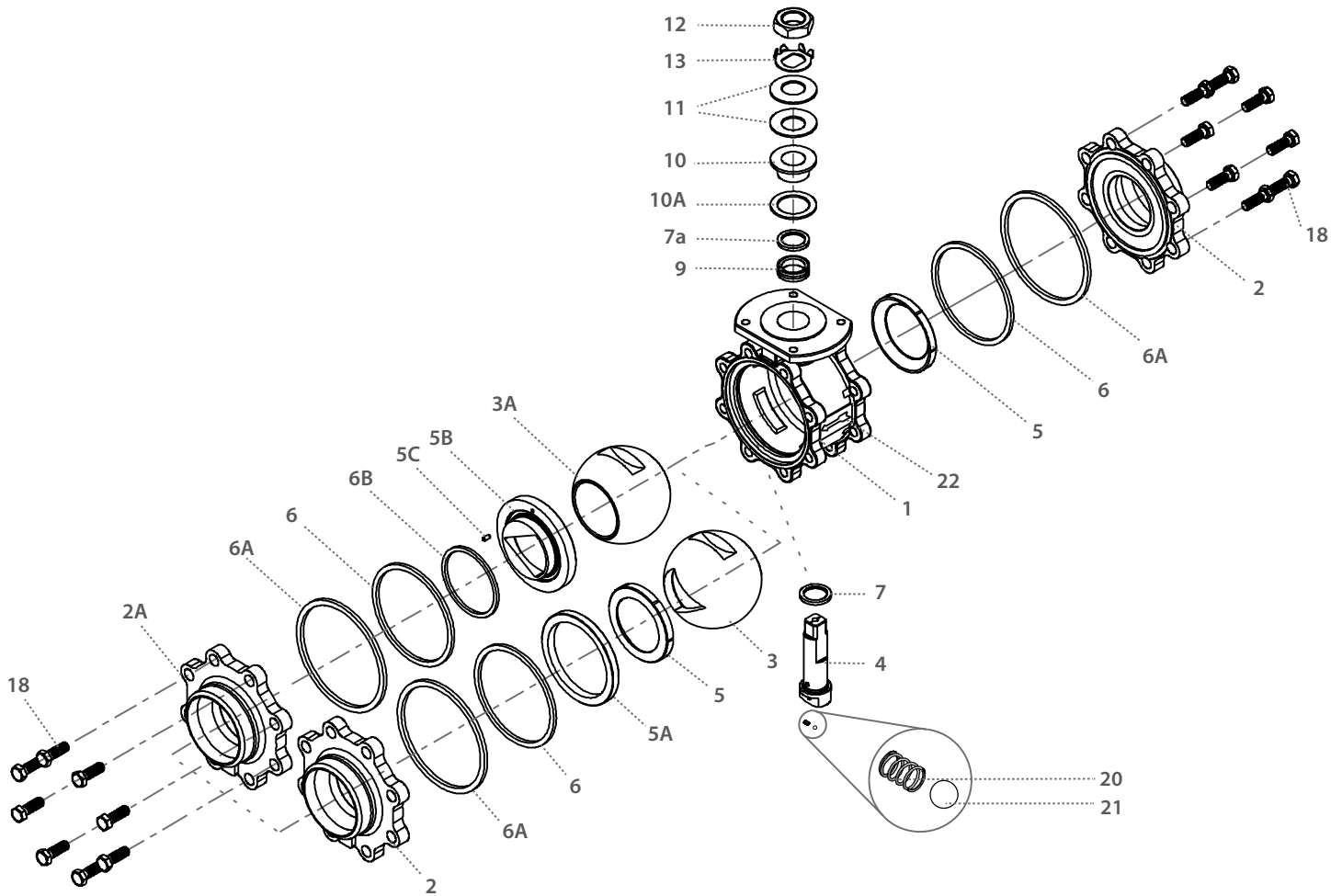
Valve Face To Face sizes are according to Habonim catalog data only, for Extended-weald/Flanged/Tri-clamp end see Face To Face sizes page.

Std. port	Full port	Unit	Ball port	A	B	C	D	W	M	N	P	Q	F	TxL	Weight kg/lb
DN80	DN65	mm	63.50	169.00	83.30	98.30	144.90	140.00	18.90	1"-14	16.70	22.70	(F10)	102.00	13.70
3"	2½"	inch	2.50	6.65	3.28	3.87	5.71	5.50	0.74	UNS-2A	0.66	0.89		4.02	30.30
DN100	DN80	mm	82.60	214.00	108.80	114.10	160.70	177.00	18.90	1"-14	16.70	22.70	(F10)	102.00	23.70
4"	3"	inch	3.25	8.43	4.28	4.49	6.33	6.97	0.74	UNS-2A	0.66	0.89		4.02	52.40
	DN100	mm	100.00	239.00	123.00	124.00	170.50	217.00	18.90	1"-14	16.70	22.70	(F10)	102.00	30.00
	4"	inch	3.94	9.41	4.84	4.88	6.71	8.54	0.74	UNS-2A	0.66	0.89		4.02	66.30



Control Floating Ball 3 Piece

Valve dimensions



Item	Description	Material specification	Qty.
1	Body	Acc. Ordering Code	1
2	End	Acc. Ordering Code	1-2
2A	V-End	Acc. Ordering Code	1
3	V-Ball	Acc. Ordering Code	1
3A	Ball	Acc. Ordering Code	1
4	Stem	Acc. Ordering Code	1
5*	Seat	Acc. Ordering Code	1-2
5A	Seat support	S. Steel	1
5B	V seat	Acc. Ordering Code	1
5C	Dowel pin	S. Steel	1
6*	Body seal	Acc. Ordering Code	2
6A	Outer seal	Acc. Ordering Code	2
6B	Seat seal	Acc. Ordering Code	1

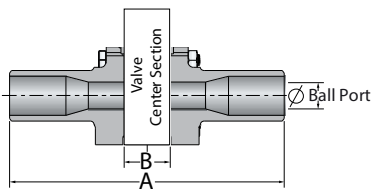
Item	Description	Material specification	Qty.
7*	Stem thrust seal	PEEK, CF PEEK, PCTFE	1
7a*	Anti-abrasion ring	PEEK, CF PEEK, PCTFE	1
9*	Stem seal	CF PTFE, TFM	1
10	Follower	S. Steel	1
10A	Slide bearing	S. Steel	1
11	Disc spring	S. Steel	2
12	Stem nut	S. Steel	1
13	Tab lock washer	S. Steel	1
18	Body bolts	S. Steel	16
20	Anti-static spring	S. Steel	2
21	Anti-static plunger	S. Steel	2
22		S. Steel	1
23	Tag (not shown)	S. Steel	1

* Standard items supplied in repair kits

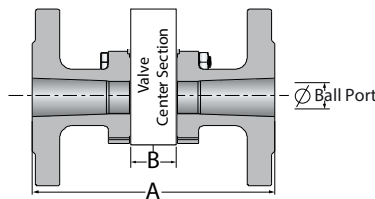
Face To Face Sizes

Valve Size	Unit	B		A-XBW		A-ETO	A-Flanged		A-TC
		Std. port	Full port	Std. port	Full port	Std. port	Std. port	Full port	Full port
DN10	mm	20.6	20.6	140.6	143.0	108.6			
3/8"	inch	0.8	0.8	5.5	5.6	4.3			
DN15	mm	20.6	24.6	140.6	147.0	137.0	140.0	152.0	88.8
1/2"	inch	0.8	1.0	5.5	5.8	5.4	5.5	6.0	3.5
DN20	mm	24.6	31.7	147.0	168.7	147.0	152.0	165.1	101.6
3/4"	inch	1.0	1.2	5.8	6.6	5.8	6.0	6.5	4.0
DN25	mm	31.7	41.3	168.7	179.3	164.1	165.1	178.1	114.3
1"	inch	1.2	1.6	6.6	7.1	6.5	6.5	7.0	4.5
DN32	mm	41.3	48.4	179.3	189.4	179.3	178.1	190.0	
1 1/4"	inch	1.6	1.9	7.1	7.5	7.1	7.0	7.5	
DN40	mm	48.4	56.3	189.4	200.3	184.0	190.0	216.1	139.8
1 1/2"	inch	1.9	2.2	7.5	7.9	7.2	7.5	8.5	5.5
DN50	mm	56.3	72.6	200.3	232.6	193.5	216.1	241.0	158.9
2"	inch	2.2	2.9	7.9	9.2	7.6	8.5	9.5	6.3
DN65	mm	72.6	83.4	232.6	283.4	222.6	241.0	282.0	213.0
2 1/2"	inch	2.9	3.3	9.2	11.2	8.8	9.5	11.1	8.4
DN80	mm	83.4	108.8	283.4	348.8	250.4	282.0	282.0	215.8
3"	inch	3.3	4.3	11.2	13.7	9.9	11.1	11.1	8.5
DN100	mm	108.8	123.0	348.8	390.0	348.8	305.0	305.0	245.4
4"	inch	4.3	4.8	13.7	15.4	13.7	12.0	12.0	9.7
DN200	mm	146.1	180.0	444.1	180.0	444.1	403.1	403.0	146.1
6"	inch	5.8	7.1	17.5	7.1	17.5	15.9	15.9	5.8

XBW / ETO



Flanged



TC

