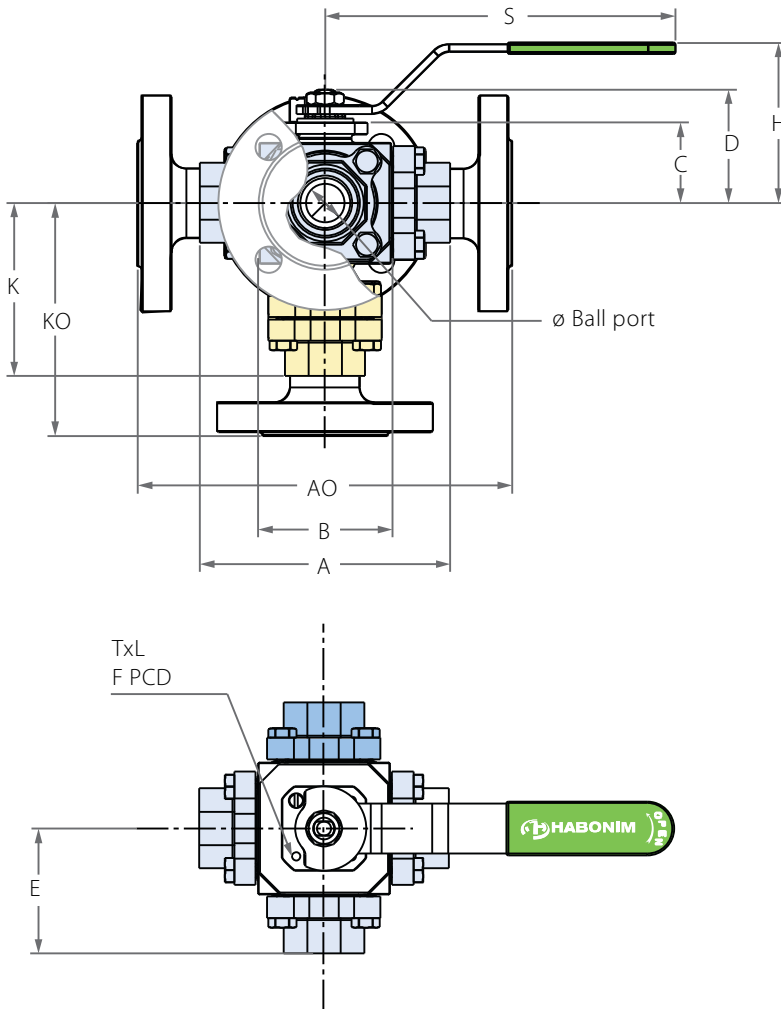
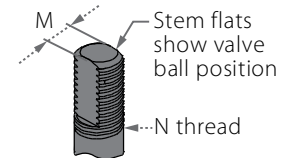
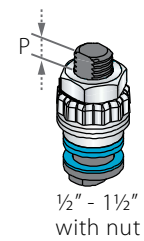


## Multiport Floating Ball

### Valve dimensions



### Preparation for actuation



Valve Face To Face sizes are according to Habonim catalog data only, for Extended-weald/Flanged/Tri-clamp end see Face To Face sizes page.

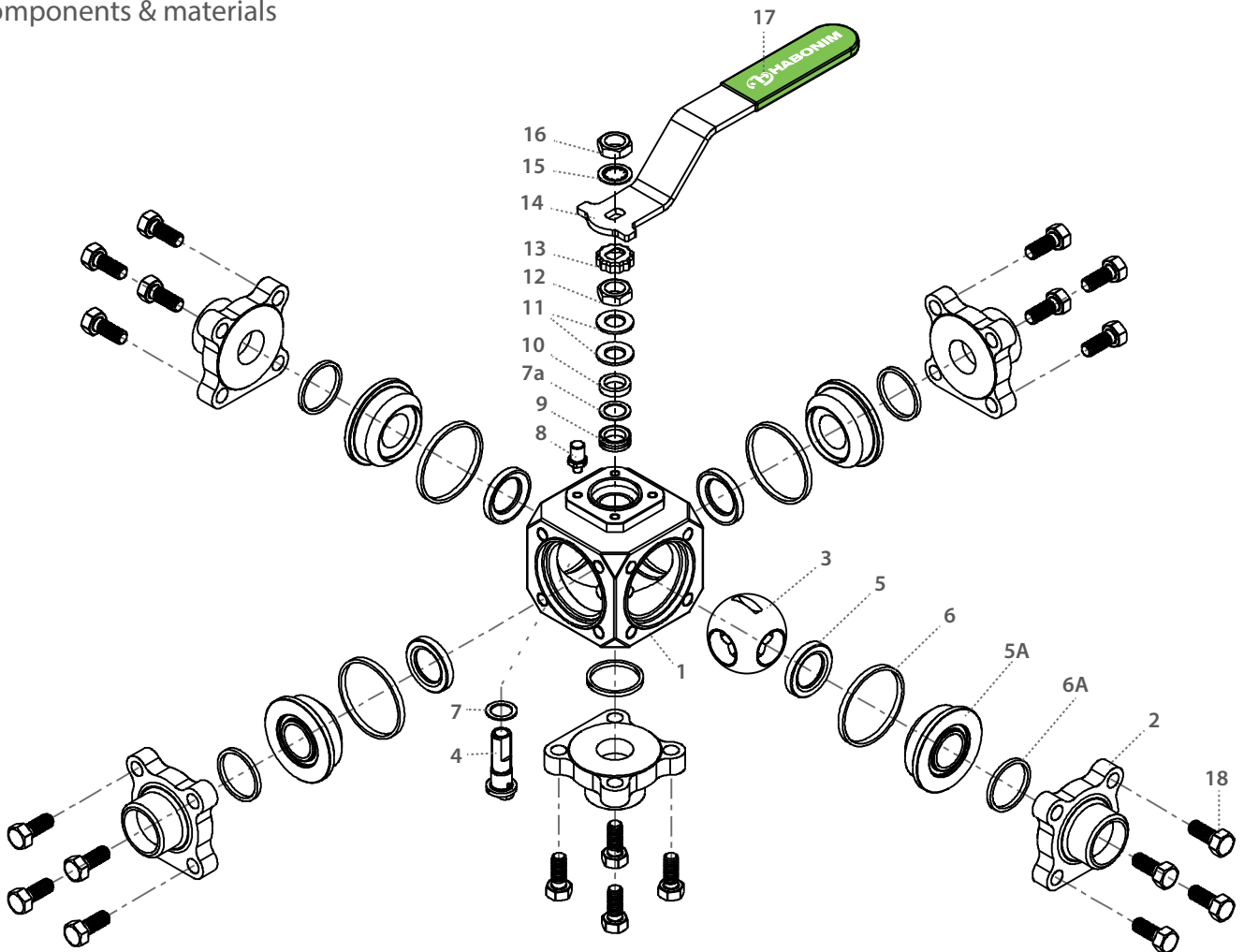
Std. port	Unit	Ball port	A	AO			B	C	D	E (E0)	K	KO			H	M	N	P	TxL	F	S	Weight kg/lb
				ANSI 150	ANSI 300	PN16 PN40						ANSI 150	ANSI 300	DIN								
DN15	mm	14.30	108.00	154.50	190.00	187.50	62.00	37.50	50.00	A/2 (A0/2)	110.50	133.70	151.50	150.20	80.00	7.54	1/16"	7.40	M5X10	(F04)	187.00	2.75
1/2"	inch	0.56	4.25	6.08	7.48	7.38	2.44	1.47	2.16		4.35	5.26	5.96	5.91	3.14	0.30	UNF	0.29			7.36	6.06
DN20	mm	14.30	108.00	154.50	190.00	187.50	62.00	37.50	50.00	A/2 (A0/2)	110.50	133.70	151.50	150.20	80.00	7.54	1/16"	7.40	M5X10	(F04)	187.00	2.75
3/4"	inch	0.56	4.25	6.08	7.48	7.38	2.44	1.47	2.16		4.35	5.26	5.96	5.91	3.14	0.30	UNF	0.29			7.36	6.06
DN25	mm	20.70	135.00	167.00	205.00	200.00	71.60	43.00	60.50	A/2 (A0/2)	93.20	109.20	128.20	125.70	85.50	7.54	7/16"	7.40	M5X10	(F04)	187.00	4.00
1"	inch	0.81	5.31	6.57	8.07	7.87	2.81	1.69	2.38		3.66	4.29	5.04	4.94	3.36	0.30	UNF	0.29			7.36	8.82
DN32	mm	25.50	144.00	174.50	205.50	207.50	76.00	48.00	65.50	A/2 (A0/2)	102.00	117.20	132.70	133.70	90.00	7.54	1/16"	7.40	M5X10	(F04)	187.00	5.80
1 1/4"	inch	1.00	5.66	6.87	8.09	8.16	2.99	1.88	2.57		4.01	4.61	5.22	5.26	3.54	0.30	UNF	0.29			7.36	12.78
DN40	mm	31.65	158.00	208.00	233.50	243.00	91.00	49.50	79.00	A/2 (A0/2)	106.00	131.00	143.70	148.50	103.00	8.71	1/16"	8.50	M6X12	(F05)	237.00	7.50
1 1/2"	inch	1.24	6.22	8.18	9.19	9.56	3.58	1.94	3.11		4.17	5.15	5.65	5.84	4.05	0.34	UNF	0.33			9.33	16.53

Valve Size		Flow Coefficients	
mm	inch	KV	CV
DN20	3/4"	9	11
DN25	1"	27	31
DN32	1 1/4"	47	55
DN40	1 1/2"	67	78



## Multiport Floating Ball

### Components & materials



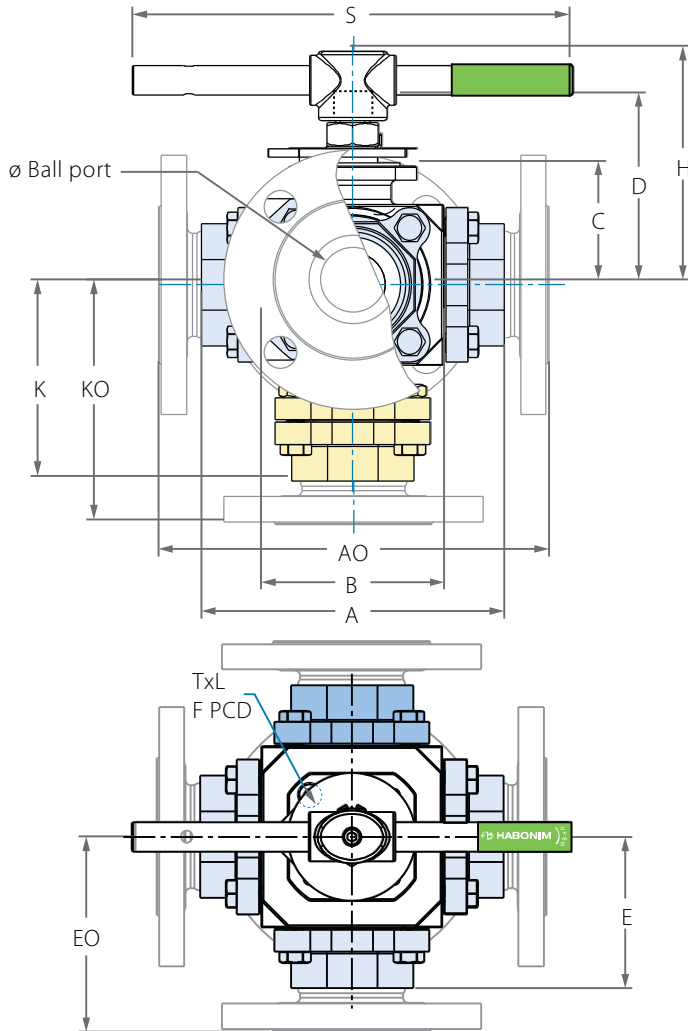
Item	Description	Material specification	Qty.
1	Body	Acc. Ordering Code	1
2	Ends	Acc. Ordering Code	4
3	Ball	Acc. Ordering Code	1
4	Stem	Acc. Ordering Code	1
5*	Seat	Acc. Ordering Code	4
5A	Support seat	Acc. Ordering Code	4
6	Inner seal	PTFE, RPTFE, UHMWPE	5
6A	Outer seal	Graphite, PTFE	4
7*	Stem thrust seal	PEEK, CF PEEK, PCTFE (KEL-F) <sup>1</sup>	1
7a	Anti-abrasion ring	PEEK, CF PEEK, PCTFE (KEL-F) <sup>1</sup>	1
8	Stop pin	S. Steel	1

Item	Description	Material specification	Qty.
9*	Stem seal	CF PTFE,TFM	1
10	Follower	S. Steel	1
11	Disc spring	S. Steel	2
12	Stem nut	S. Steel	1
13	Locking clip	S. Steel	1
14	Handle	S. Steel	1
15	Serrated washer	S. Steel	1
16	Handle nut	S. Steel	1
17	Sleeve	PVC	1
18	Body bolt	S. Steel	20
23	Tag (not shown)	S. Steel	1

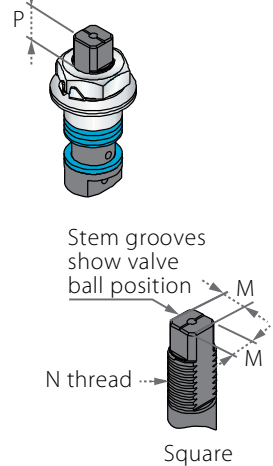
\* Repair kit components

## Multiport Floating Ball

### Valve dimensions



### Preparation for actuation



Valve Face To Face sizes are according to Habonim catalog data only, for Extended-weald/Flanged/Tri-clamp end see Face To Face sizes page.

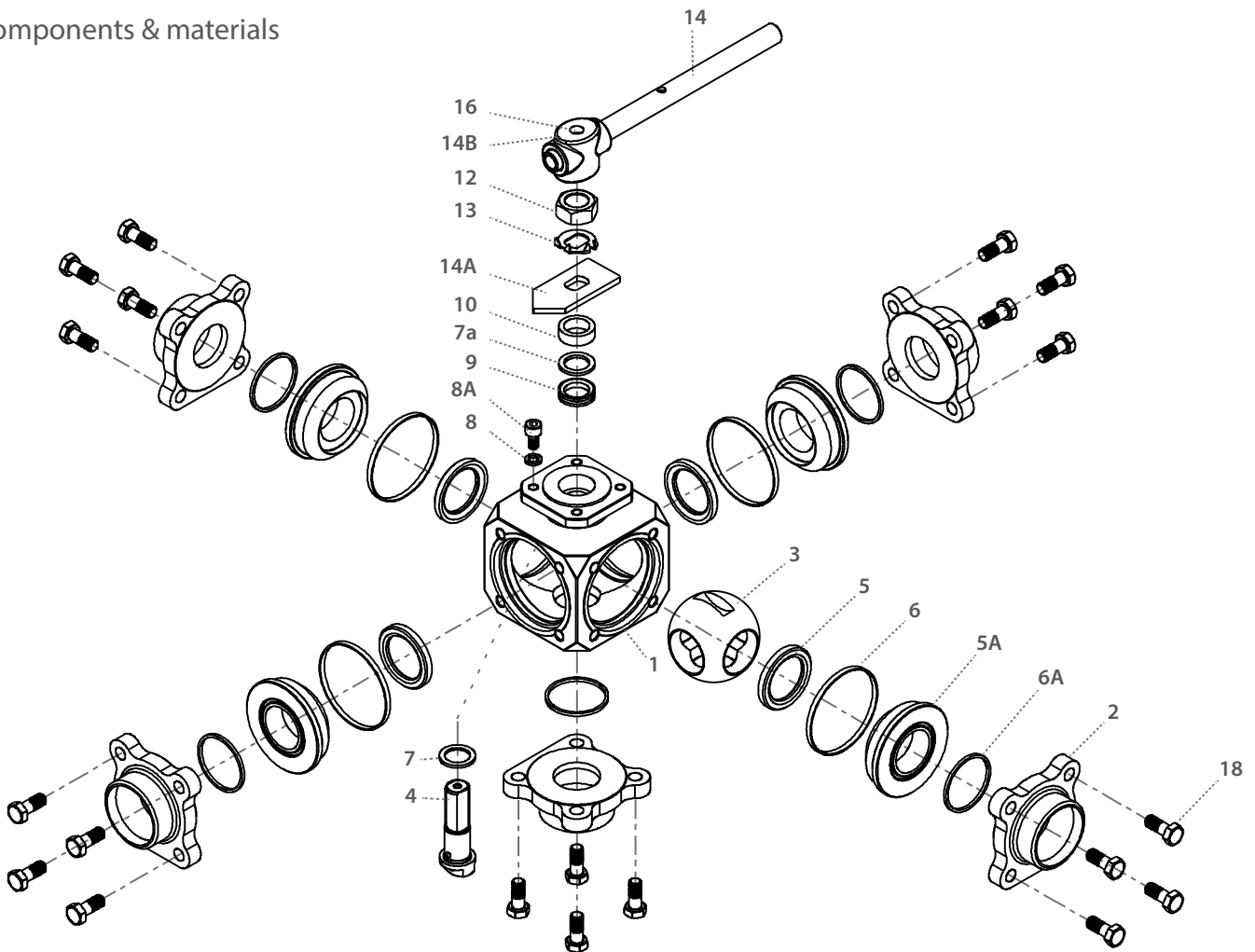
Std. port	Unit	Ball port	A	A0			B	C	D	E (E0)	K	K0			H	M	M-DD	N	P	TxL	F	S	Weight kg/lb
				ANSI 150	ANSI 300	PN16 PN40						ANSI 150	ANSI 300	PN16 PN40									
DN50	mm	38.10	178.00	228.70	266.80	280.90	107.20	69.60	111.20	A/2 (A0/2)	115.00	140.50	159.50	166.30	139.40	13.90	-	M20x2.5	14.60	M8X12	(F07)	400.00	90
2"	inch	1.50	7.00	9.00	10.50	11.05	4.22	2.74	4.37		4.52	5.53	6.27	6.54	5.48	0.55	-		0.57				15.75
DN65	mm	50.80	210.40	242.90	293.70	342.40	125.00	78.50	120.10	A/2 (A0/2)	143.20	159.50	184.80	209.20	150.90	13.90	-	M20x2.5	14.60	M8X12	(F07)	400.00	183
2½"	inch	2.00	8.28	9.56	11.56	13.48	4.92	3.09	4.72		5.63	6.27	7.27	8.23	5.94	0.55	-		0.57				15.75
DN80	mm	60.00	250.00	283.90	363.20	390.60	164.00	102.00	149.00	A/2 (A0/2)	149.00	158.00	158.00	158.00	139.40	18.90	15.90	1"-14	16.70	M10x20	(F10)	610.00	264
3"	inch	2.36	9.84	11.17	14.29	15.37	6.45	4.01	5.86		5.87	6.22	6.22	6.22	5.48	0.74	0.63	UNS-2A	0.66				24.00
DN100	mm	76.00	309.80	324.80	401.00	446.20	205.00	116.70	168.00	A/2 (A0/2)	190.00	200.00	200.00	200.00	150.90	28.45	23.75	1"-14	26.20	M10x20	(F10)	920.00	541
4"	inch	2.99	12.19	12.19	15.78	17.56	8.07	4.59	6.61		7.48	7.87	7.87	7.87	5.94	0.74	0.63	UNS-2A	0.66				36.20

Valve Size		Flow Coefficients	
mm	inch	KV	CV
DN50	2"	87	101
DN65	2½"	201	233
DN80	3"	267	310
DN100	4"	484	562



## Multiport Floating Ball

### Components & materials



Item	Description	Material specification	Qty.
1	Body	Acc. Ordering Code	1
2	Ends	Acc. Ordering Code	4
3	Ball	Acc. Ordering Code	1
4	Stem	Acc. Ordering Code	1
5*	Seat	Acc. Ordering Code	4
5A	Support seat	Acc. Ordering Code	4
6	Inner seal	PTFE, RPTFE, UHMWPE	5
6A	Outer seal	Graphite, PTFE	4
7*	Stem thrust seal	PEEK, CF PEEK, PCTFE (KEL-F)	1
7a	Anti-abrasion ring	PEEK, CF PEEK, PCTFE (KEL-F)	1
8	Spring Washer	S. Steel	1
8A	Stop Bolts	S. Steel	1

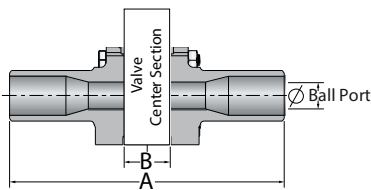
Item	Description	Material specification	Qty.
9*	Stem seal	CF PTFE,TFM	1
10	Follower	S. Steel	1
12	Stem nut	S. Steel	1
13	Tab Lock Washer	S. Steel	1
14	Wrench Handle	C.St. Zinc Plate	1
14A	Stop Plate	S. Steel	1
14B	Wrench Head	S. Steel	1
16	Wrench Bolt	S. Steel	1
17	Sleeve	PVC	1
18	Body bolt	S. Steel	20
23	Tag (not shown)	S. Steel	1

\* Repair kit components

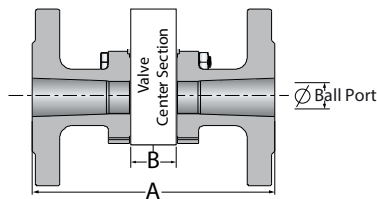
## Face To Face Sizes

Valve Size	Unit	B		A-XBW		A-ETO	A-Flanged		A-TC
		Std. port	Full port	Std. port	Full port	Std. port	Std. port	Full port	Full port
DN10	mm	62.0	62.0	182.0	184.4	150.0			
3/8"	inch	2.4	2.4	7.2	7.3	5.9			
DN15	mm	62.0	62.0	182.0	184.4	178.4	181.4	189.4	130.2
1/2"	inch	2.4	2.4	7.2	7.3	7.0	7.1	7.5	5.1
DN20	mm	62.0	71.6	184.4	208.6	184.4	189.4	205.0	139.0
3/4"	inch	2.4	2.8	7.3	8.2	7.3	7.5	8.1	5.5
DN25	mm	71.6	76.0	208.6	214.0	204.0	205.0	212.8	154.2
1"	inch	2.8	3.0	8.2	8.4	8.0	8.1	8.4	6.1
DN32	mm	76.0	91.0	214.0	232.0	214.0	212.8	232.6	
1 1/4"	inch	3.0	3.6	8.4	9.1	8.4	8.4	9.2	
DN40	mm	91.0	107.2	232.0	251.2	226.6	232.6	267.0	182.4
1 1/2"	inch	3.6	4.2	9.1	9.9	8.9	9.2	10.5	7.2
DN50	mm	107.2	125.0	251.2	285.0	244.4	267.0	293.4	209.8
2"	inch	4.2	4.9	9.9	11.2	9.6	10.5	11.6	8.3
DN65	mm	125.0	164.0	285.0	364.0	275.0	293.4	362.6	265.4
2 1/2"	inch	4.9	6.5	11.2	14.3	10.8	11.6	14.3	10.4
DN80	mm	164.0	205.0	364.0	445.0	331.0	362.6	378.2	296.4
3"	inch	6.5	8.1	14.3	17.5	13.0	14.3	14.9	11.7
DN100	mm	205.0		445.0	267.0	445.0	401.2	182.0	341.6
4"	inch	8.1		17.5	10.5	17.5	15.8	7.2	13.4
DN200	mm			298.0	0.0	298.0	257.0	223.0	0.0
6"	inch			11.7	0.0	11.7	10.1	8.8	0.0

XBW / ETO



Flanged



TC

