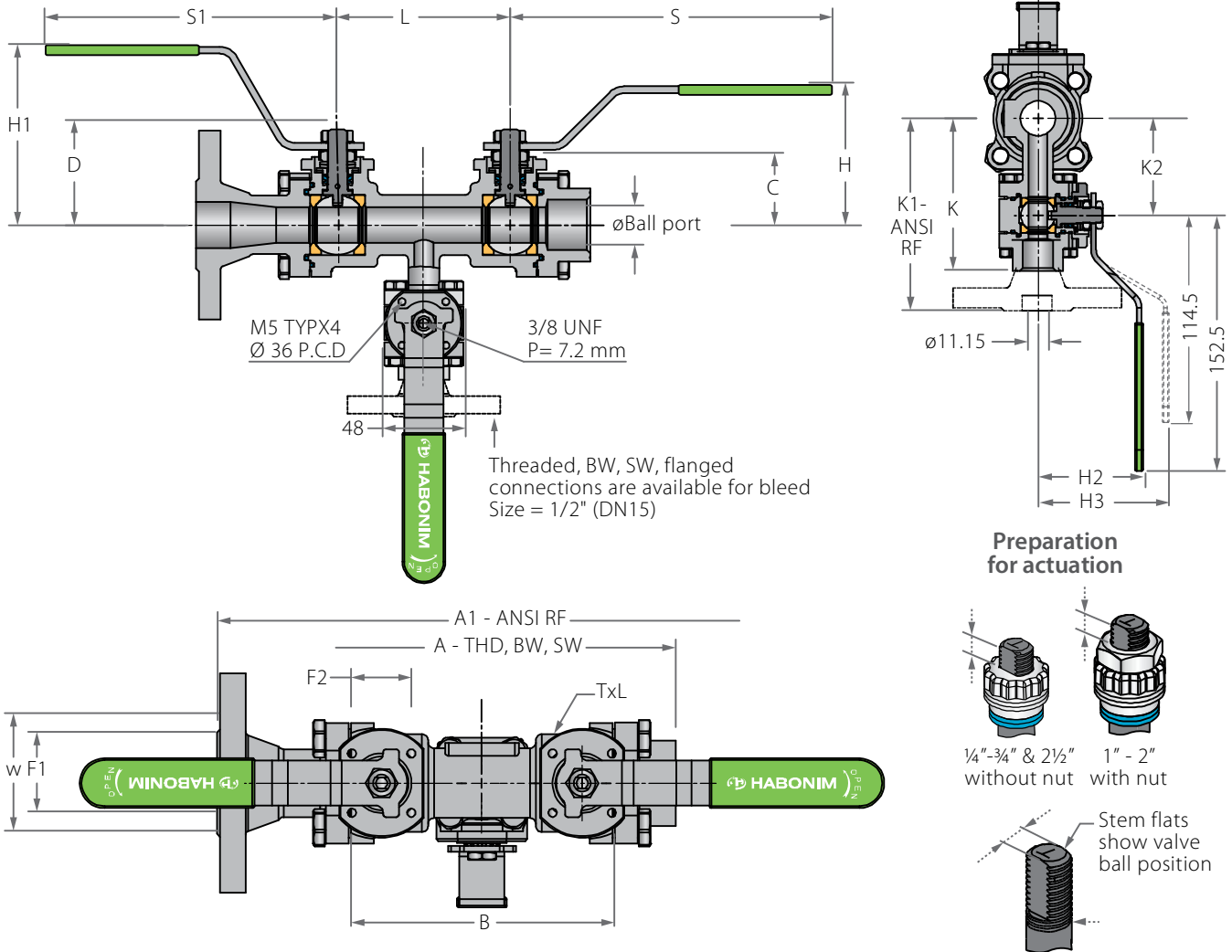


## Dual Safe | Double Block & Bleed Floating Ball 3 Piece

### Valve dimensions



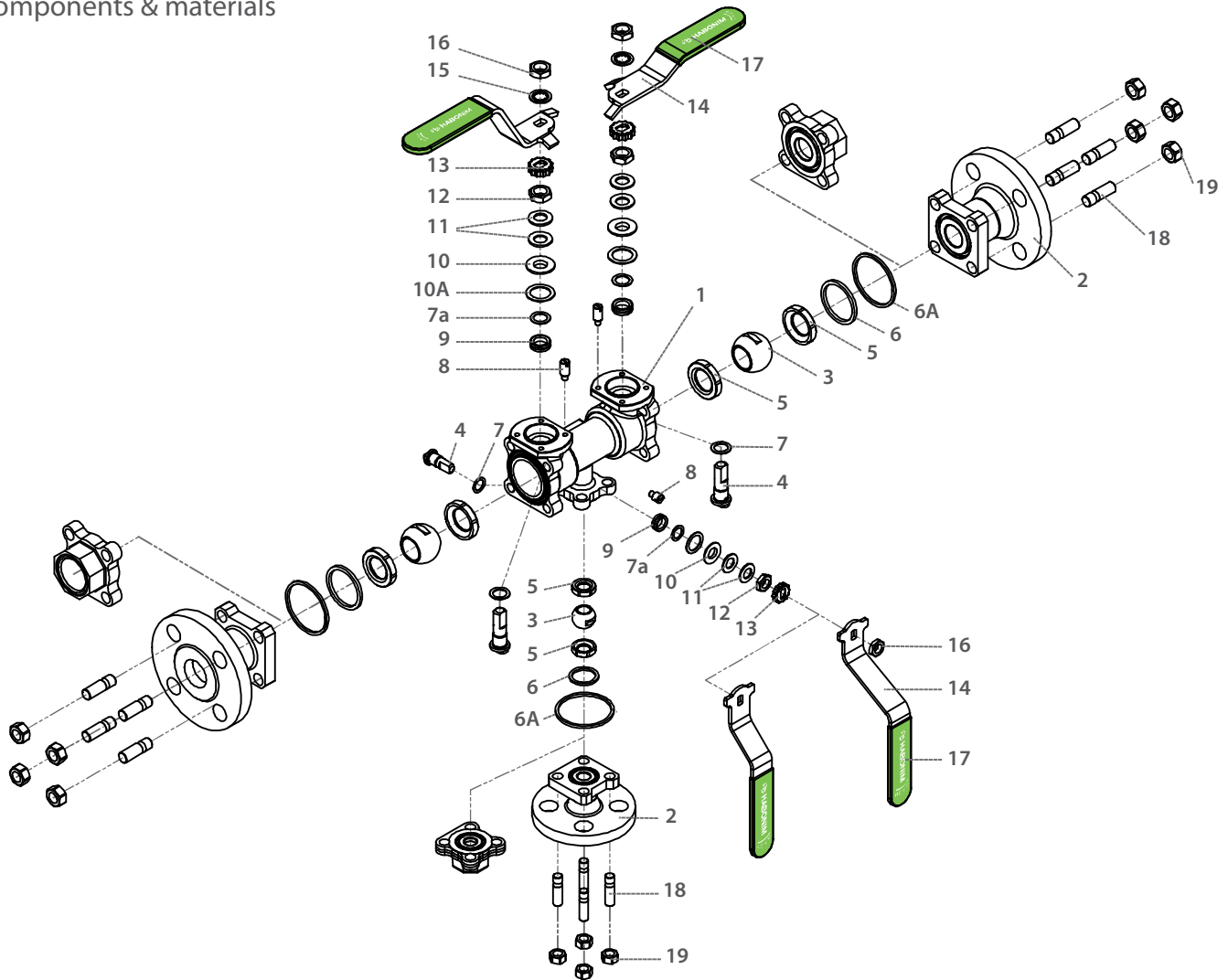
Valve Face To Face sizes are according to Habonim catalog data only, for Extended-weald/Flanged/Tri-clamp end see Face To Face sizes page.

Std. port	Unit	Ball Port	A1-RF	A	B	C	D	H	H1	H2	H3	K	K1	K2	L	S	S1	W	N	P	F	TxL	Kv
																							Cv
DN15	mm	11.15	212.6	138.4	93.2	29.00	37.8	91	47	62	92	90.3	127.4	57.4	72.6	114.5	152.5	47	3/8 UNF	6.65 (F03)	36	M5X10	6.9
1/2"	inch	0.44	8.05	5.43	3.65	1.14	1.49	3.58	1.85	2.44	3.62	3.54	5.01	2.26	2.85	4.51	6	1.84		0.26	1.41		8
DN20	mm	14.3	235.2	153.2	107.2	31.40	40.3	93	49	62	92	86.3	127	53.4	82.65	114.5	152.5	53.7	3/8 UNF	6.65 (F03)	36	M5X10	10
3/4"	inch	0.56	9.22	6.01	4.2	1.23	1.59	3.66	1.93	2.44	3.62	3.38	5.00	2.1	3.24	4.51	6	2.11		0.26	1.41		12
DN25	mm	20.65	265.9	193.9	131.9	38.15	55.6	106	62	62	92	90.3	126	57.4	100.5	146	163	63.7	7/16 UNF	7.4 (F04)	42	M5X10	28
1"	inch	0.81	10.43	7.6	5.17	1.50	2.19	4.17	2.44	2.44	3.62	3.54	4.96	2.26	3.94	5.75	6.42	2.50		0.29	1.65		32
DN32	mm	25.5	279.2	209.3	142.2	42.65	60.2	109.5	90.5	88	118	92.3	127.2	59.4	100.95	146	163	71.7	7/16 UNF	7.4 (F04)	42	M5X10	49
1 1/4"	inch	1	10.95	8.21	5.58	1.67	2.37	4.31	3.56	3.46	4.65	3.62	5.00	2.34	3.96	5.75	6.42	2.81		0.29	1.65		57
DN40	mm	31.8	318.2	241.9	176.2	43.55	73	121.5	99.6	88	118	98.3	135.6	65.4	127.85	180	259	86.7	9/16 UNF	8.5 (F05)	50	M6X12	69
1 1/2"	inch	1.25	12.48	9.49	6.91	1.71	2.87	4.78	3.92	3.46	4.65	3.85	5.34	2.57	5.01	7.09	10.2	3.40		0.33	1.96		80
DN50	mm	38.15	344.2	254.2	184.2	48.25	77.8	125	103	88	118	104.3	149.2	71.4	127.9	180	259	96.9	9/16 UNF	8.5 (F05)	50	M6X12	102
2"	inch	1.5	13.5	9.97	7.22	1.89	3.06	4.95	4.06	3.46	4.65	4.09	5.87	2.81	5.02	7.09	10.2	3.80		0.33	1.96		118
DN65	mm	51.05	398.2	314.6	229.2	70.00	88.1	138	116	88	118	111.3	152.8	78.4	156.54	180	259	108	9/16 UNF	13.5 (F07)	70	M8X12	208
2 1/2"	inch	2.01	15.61	12.34	8.99	2.75	3.47	5.43	4.57	3.46	4.65	4.36	6.01	3.08	6.14	7.09	10.2	4.24		0.53	2.75		241



## Dual Safe | Double Block & Bleed Floating Ball 3 Piece

### Components & materials



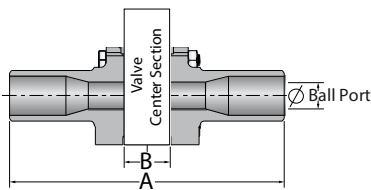
Item	Description	Material specifications	Qty.
1	Body	Acc. Ordering Code	1
2	Ends	Acc. Ordering Code	3
3	Ball	Acc. Ordering Code	3
4	Stem	Acc. Ordering Code	3
5*	Seat	Acc. Ordering Code	6
6*	Body seal	PTFE, RPTFE, TFM, UHMWPE, Graphite	3
6A	Outer seal	Acc. Ordering Code	
7*	Stem thrust seal	PEEK, CF PEEK, PCTFE (KEL-F), TFM, CF PTFE	3
7a**	Anti-abrasion ring	PEEK, CF PEEK, PCTFE (KEL-F), TFM, CF PTFE	3
8	Stop pin	S. Steel	3
9*	Stem seal	CF PTFE, TFM, Graphite	3
10	Follower	S. Steel	3
10A	Slide bearing	S. Steel	3

Item	Description	Material specifications	Qty.
11	Disc spring	S. Steel	6
12	Stem nut	S. Steel	3
13	Locking clip	S. Steel	3
14	Handle	S. Steel	3
15	Serrated washer	S. Steel	2
16	Handle nut	S. Steel	3
17	Sleeve	PVC	3
18	Body bolt	S. Steel	12
19	Body nut	S. Steel	12
20	Anti-static spring	S. Steel	3
21	Anti-static plunger	S. Steel	3
23	Tag (not shown)	S. Steel	1

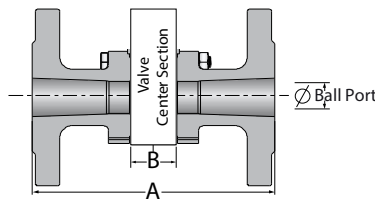
## Face To Face Sizes

Valve Size	Unit	B		A-XBW		A-ETO	A-Flanged		A-TC
		Std. port	Full port	Std. port	Full port	Std. port	Std. port	Full port	Full port
DN10	mm	93.2	93.2	213.2	215.6	181.2			
3/8"	inch	3.7	3.7	8.4	8.5	7.1			
DN15	mm	93.2	107.2	213.2	229.6	209.6	212.6	234.6	161.4
1/2"	inch	3.7	4.2	8.4	9.0	8.3	8.4	9.2	6.4
DN20	mm	107.2	132.2	229.6	269.2	229.6	234.6	265.6	184.2
3/4"	inch	4.2	5.2	9.0	10.6	9.0	9.2	10.5	7.3
DN25	mm	132.2	142.2	269.2	280.2	264.6	265.6	279.0	214.8
1"	inch	5.2	5.6	10.6	11.0	10.4	10.5	11.0	8.5
DN32	mm	142.2	176.2	280.2	317.2	280.2	279.0	317.8	
1 1/4"	inch	5.6	6.9	11.0	12.5	11.0	11.0	12.5	
DN40	mm	176.2	184.2	317.2	328.2	311.8	317.8	344.0	267.6
1 1/2"	inch	6.9	7.3	12.5	12.9	12.3	12.5	13.5	10.5
DN50	mm	184.2	229.2	328.2	389.2	321.4	344.0	397.6	286.8
2"	inch	7.3	9.0	12.9	15.3	12.7	13.5	15.7	11.3
DN65	mm	229.2		389.2		379.2	397.6		369.6
2 1/2"	inch	9.0		15.3		14.9	15.7		14.6

XBW / ETO



Flanged



TC

