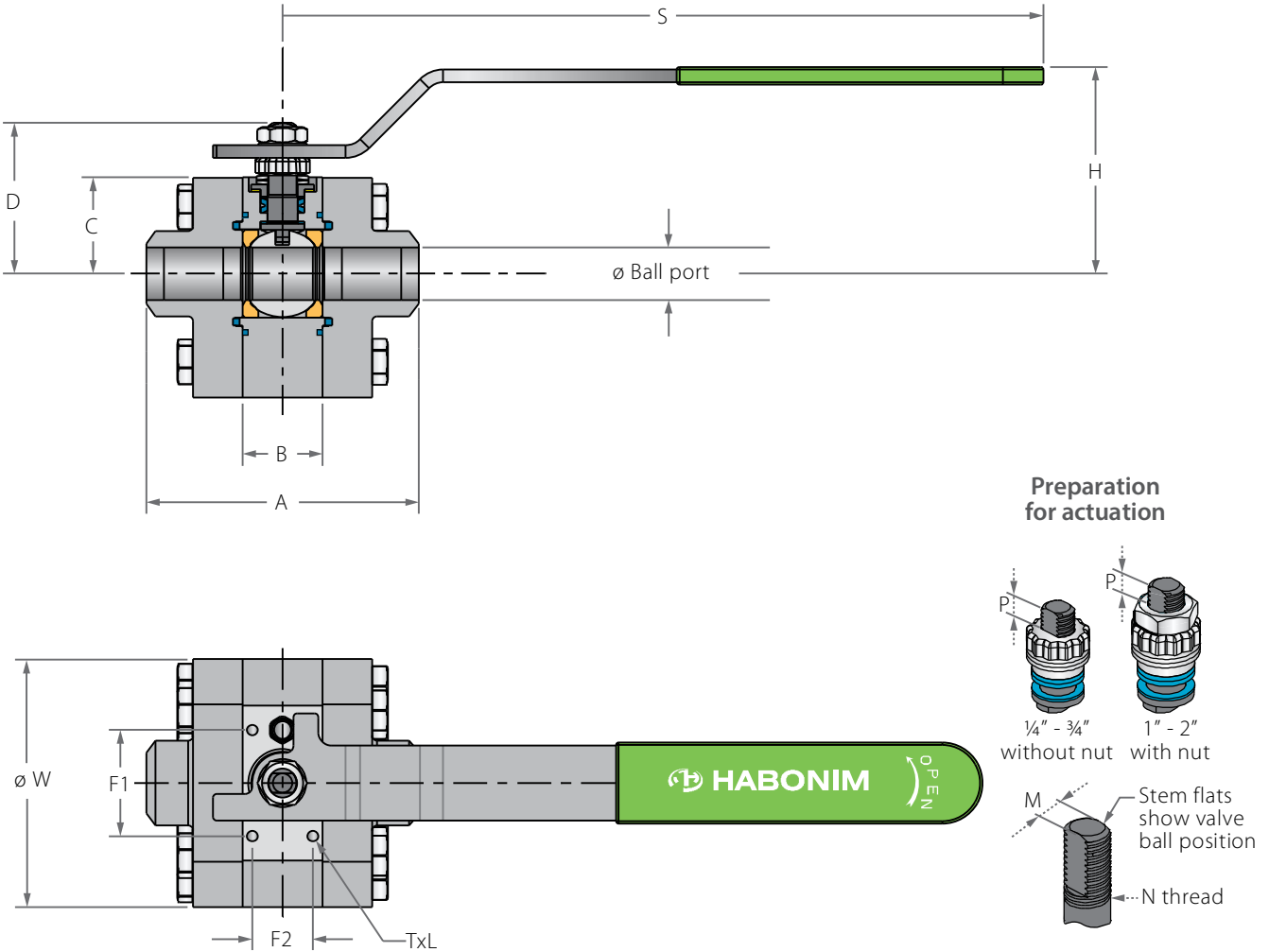


# High Pressure Floating Ball 3 Piece

## Valve dimensions



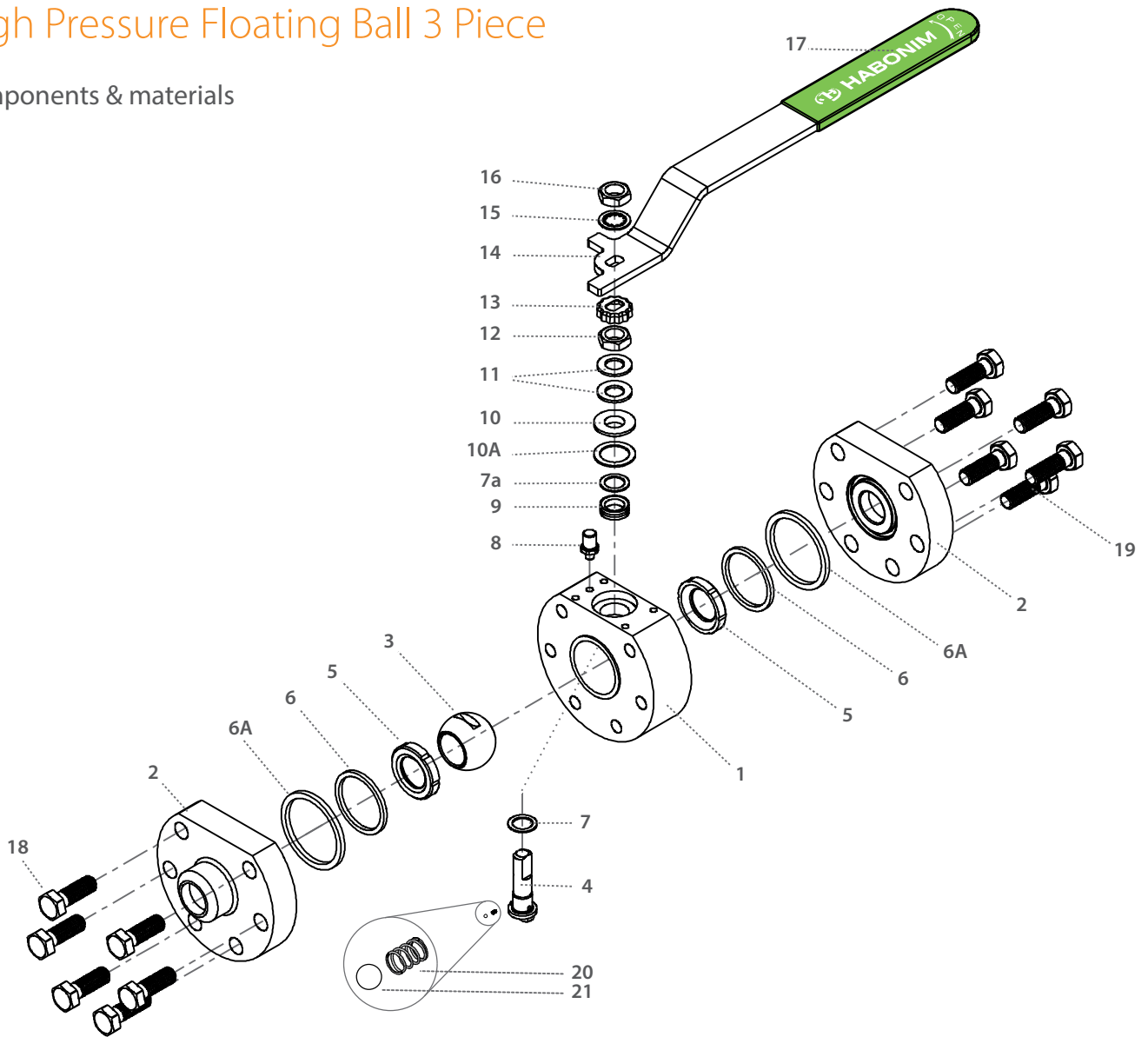
Valve Face To Face sizes are according to Habonim catalog data only, for Extended-weald/Flanged/Tri-clamp end see Face To Face sizes page.

Std. port	Unit	Ball port	A	B	C	D	øW	H	M	N	P	S	TxL	F1	F2	weight kg/lb	kv cv
DN8	mm	11.10	77.80	20.60	27.00	38.00	69.50	46.00	5.50	3/8" UNF	7.00	179.00	M5x8	34.00	0.00	1.60	2.6
1/4"	inch	0.44	3.06	0.81	1.06	1.50	2.74	1.81	0.22	3/8" UNF	0.28	7.05	M5x8	1.34	0.00	3.50	3.0
DN10	mm	11.10	77.80	20.60	27.00	38.00	69.50	46.00	5.50	3/8" UNF	7.00	179.00	M5x8	34.00	0.00	1.60	4.3
3/8"	inch	0.44	3.06	0.81	1.06	1.50	2.74	1.81	0.22	3/8" UNF	0.28	7.05	M5x8	1.34	0.00	3.50	5.0
DN15	mm	11.10	77.80	20.60	27.00	38.00	69.50	46.00	5.50	3/8" UNF	7.00	179.00	M5x8	34.00	0.00	1.60	6.9
1/2"	inch	0.44	3.06	0.81	1.06	1.50	2.74	1.81	0.22	3/8" UNF	0.28	7.05	M5x8	1.34	0.00	3.50	8.0
DN20	mm	14.30	85.00	24.60	29.40	40.40	79.00	48.00	5.50	3/8" UNF	7.00	179.00	M5x8	34.00	15.00	2.40	10
3/4"	inch	0.56	3.35	0.97	1.16	1.59	3.11	1.89	0.22	3/8" UNF	0.28	7.05	M5x8	1.34	0.59	5.30	12
DN25	mm	20.60	107.90	31.80	38.20	55.70	98.00	64.00	7.54	7/16" UNF	7.00	300.00	M5x8	42.00	24.00	4.50	28
1"	inch	0.81	4.25	1.25	1.50	2.19	3.86	2.52	0.30	7/16" UNF	0.28	11.81	M5x8	1.65	0.94	9.90	32
DN32	mm	25.40	120.70	41.20	38.20	60.30	109.00	68.70	7.54	1/2" UNF	7.00	300.00	M5x8	42.00	24.00	5.40	49
1 1/4"	inch	1.00	4.75	1.62	1.50	2.37	4.29	2.70	0.30	1/2" UNF	0.28	11.81	M5x8	1.65	0.94	11.90	57
DN40	mm	31.80	131.20	48.40	50.00	72.80	128.00	81.10	8.71	5/8" UNF	10.00	400.00	M6x8	40.00	36.00	9.50	69
1 1/2"	inch	1.25	5.17	1.91	1.97	2.87	5.04	3.19	0.34	5/8" UNF	0.39	15.75	M6x8	1.57	1.42	20.90	80
DN50	mm	38.20	142.90	56.30	55.00	77.80	145.00	81.10	8.71	3/4" UNF	10.00	400.00	M6x8	58.00	40.00	13.10	102
2"	inch	1.50	5.63	2.22	2.17	3.06	5.71	3.19	0.34	3/4" UNF	0.39	15.75	M6x8	2.28	1.57	28.90	118



# High Pressure Floating Ball 3 Piece

## Components & materials



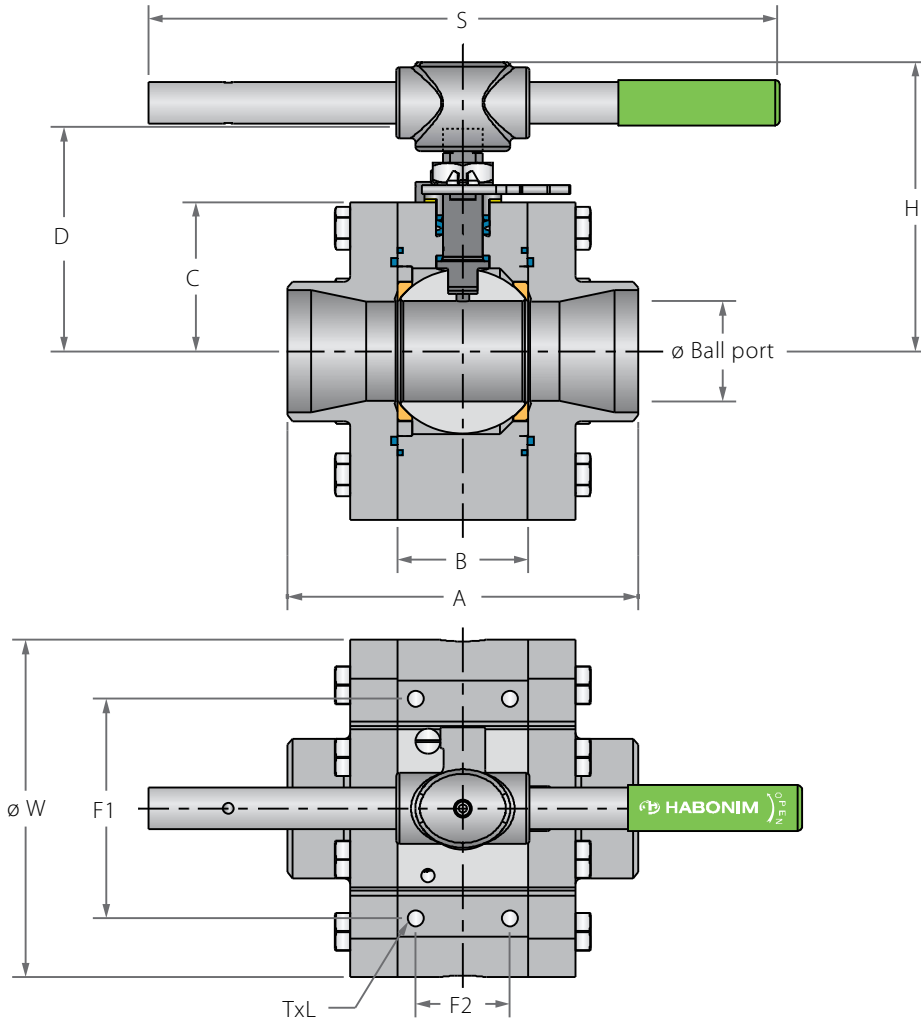
Item	Description	Material specification	Qty.
1	Body	Acc. Ordering Code	1
2	End	Acc. Ordering Code	2
3	Ball	Acc. Ordering Code	1
4	Stem	Acc. Ordering Code	1
5*	Seat	Acc. Ordering Code	2
6*	Inner seal	Acc. Ordering Code	2
6A*	Outer seal	Acc. Ordering Code	2
7*	Stem thrust seal	PEEK, CF PEEK, PCTFE	1
7a*	Anti-abrasion ring	PEEK, CF PEEK, PCTFE	1
8	Stop pin	S. Steel	1
9*	Stem seal	CF PTFE, TFM	1
10	Follower	S. Steel	1
10A*	Slide bearing	S. Steel	1

Item	Description	Material specification	Qty.
11	Disc spring	S. Steel	2
12	Stem nut	S. Steel	1
13	Locking clip	S. Steel	1
14	Handle	S. Steel	1
15	Serrated washer	S. Steel	1
16	Handle nut	S. Steel	1
17	Sleeve	PVC	1
18	Body bolt	S. Steel	12-16
20	Anti static spring	S. Steel	1
21	Anti static plunger	S. Steel	1
23	Tag (not shown)	S. Steel	1

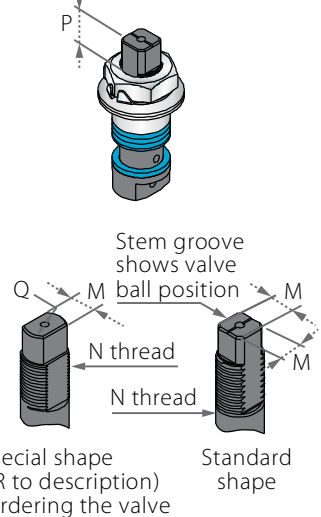
\* Repair kit components

## High Pressure Floating Ball 3 Piece

### Valve dimensions



### Preparation for actuation



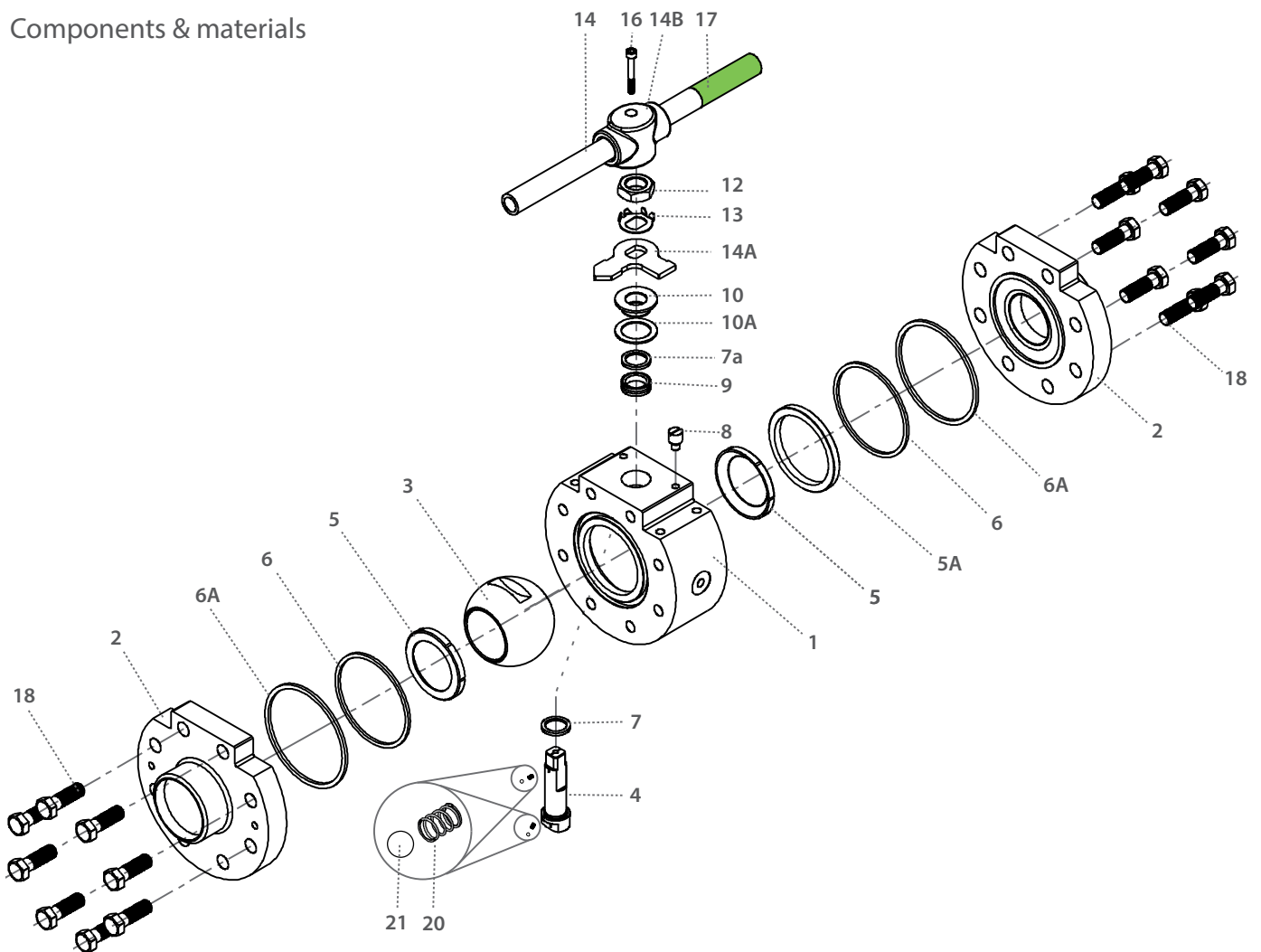
Valve Face To Face sizes are according to Habonim catalog data only, for Extended-weald/Flanged/Tri-clamp end see Face To Face sizes page.

Std. port	Unit	Ball port	A	B	C	D	ØW	H	M	M-DD	N	P	Q	S	TxL	F1	F2	Weight kg/lb	kv cv
DN65	mm	50.80	172.60	72.60	77.20	115.80	190.00	147.00	13.90	-	M20x2.5	16.50	-	256.00	M12x16	92.00	50.00	25.00	208
2½"	inch	2.00	6.80	2.86	3.04	4.56	7.48	5.79	0.55	-		0.65	-	10.08		3.62	1.97	55.10	241
DN80	mm	63.75	224.00	83.30	70.00	144.90	215.00	185.00	18.90	15.90	1"-14"	16.60	22.70	402.00	M10x12	140.00	60.00	39.00	300
3"	inch	2.51	8.82	3.28	2.76	5.70	8.46	7.28	0.74	0.62	UNS	0.65	0.89	15.83		5.51	2.36	85.98	348
DN100	mm	82.70	268.00	108.80	90.00	160.70	250.00	201.00	18.90	15.90	1"-14"	16.60	22.70	610.00	M10x12	150.00	70.00	64.00	615
4"	inch	3.26	10.55	4.28	3.54	6.33	9.84	7.91	0.74	0.62	UNS	0.65	0.89	24.02		5.91	2.76	141.10	713
DN150	mm	114.00	336.00	146.10	120.00	226.30	295.00	280.00	28.50	23.80	1½"-12"	26.20	35.20	916.00	M16x18	140.00	66.00	120.00	872
6"	inch	4.49	13.23	5.57	4.72	8.91	11.61	11.02	1.12	0.94	UNF	1.03	1.39	36.06		5.51	2.60	264.55	1012
DN200	mm	144.40	558.60	178.60	136.00	300.70	348.00	-	35.90	-	2"-8"	58.00	-	-	M20x25	170.00	96.00	225.00	1552
8"	inch	5.69	21.99	7.03	5.35	11.84	13.70	-	1.41	-	UN-2A	2.28	-	-		6.69	3.78	496.04	1800



## High Pressure Floating Ball 3 Piece

### Components & materials



Item	Description	Material specification	Qty.
1	Body	Acc. Ordering Code	1
2	End	Acc. Ordering Code	2
3	Ball	Acc. Ordering Code	1
4	Stem	Acc. Ordering Code	1
5*	Seat	Acc. Ordering Code	2
5A	Support ring	S. Steel	1
6*	Inner seal	Acc. Ordering Code	2
6A*	Outer Seal	Acc. Ordering Code	2
7*	Stem thrust seal	PEEK, CF PEEK, PCTFE	1
7a**	Anti-abrasion ring	PEEK, CF PEEK, PCTFE	1
8	Stop pin	S. Steel	1
9*	Stem seal	CF PTFE, TFM	1
10	Follower	S. Steel	1

Item	Description	Material specification	Qty.
10A*	Slide bearing	S. Steel	1
12	Stem nut	S. Steel	1
13	Tab lock washer	S. Steel	1
14	Handle	S. Steel	1
14A	Stop plate	S. Steel	1
14B	Wrench head	S. Steel	1
16	Wrench bolt	S. Steel	1
17	Sleeve	PVC	1
18	Body bolt	S. Steel	16-28
20	Anti static spring	S. Steel	2
21	Anti static plunger	S. Steel	2
23	Tag (not shown)	S. Steel	1

\* Repair kit components