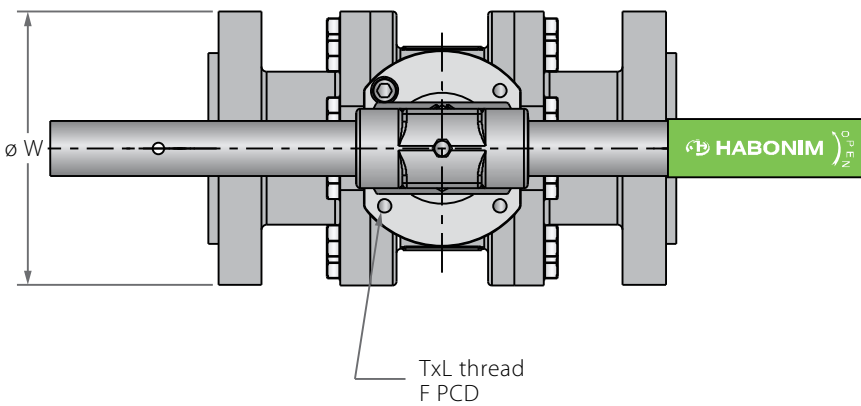
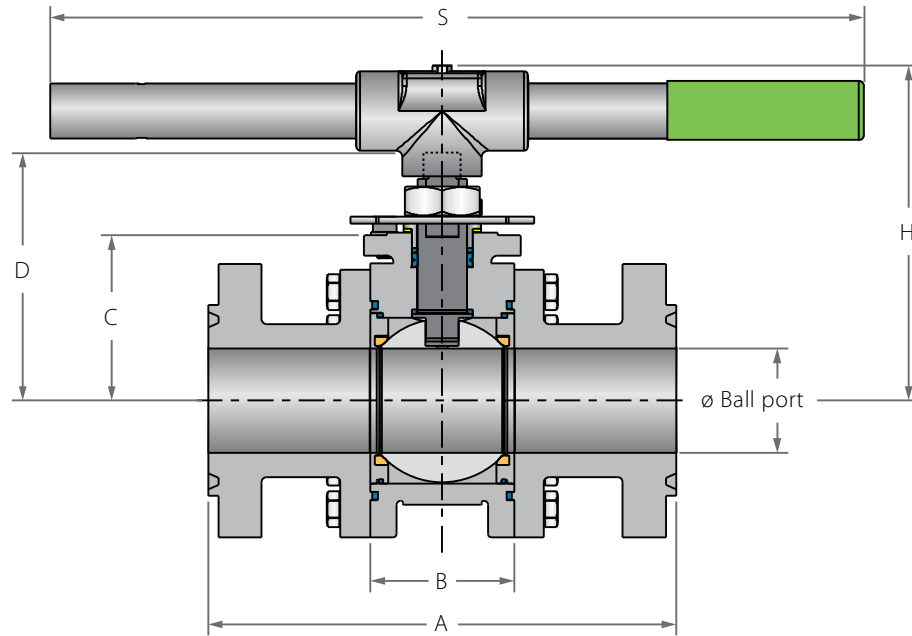
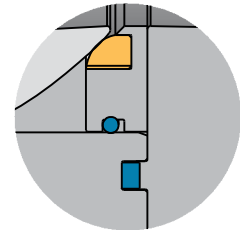


## Floating Ball 3 Piece

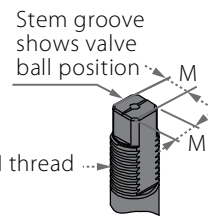
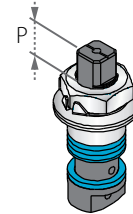
### Valve dimensions



Optional hybrid seat U-shape



Preparation for actuation



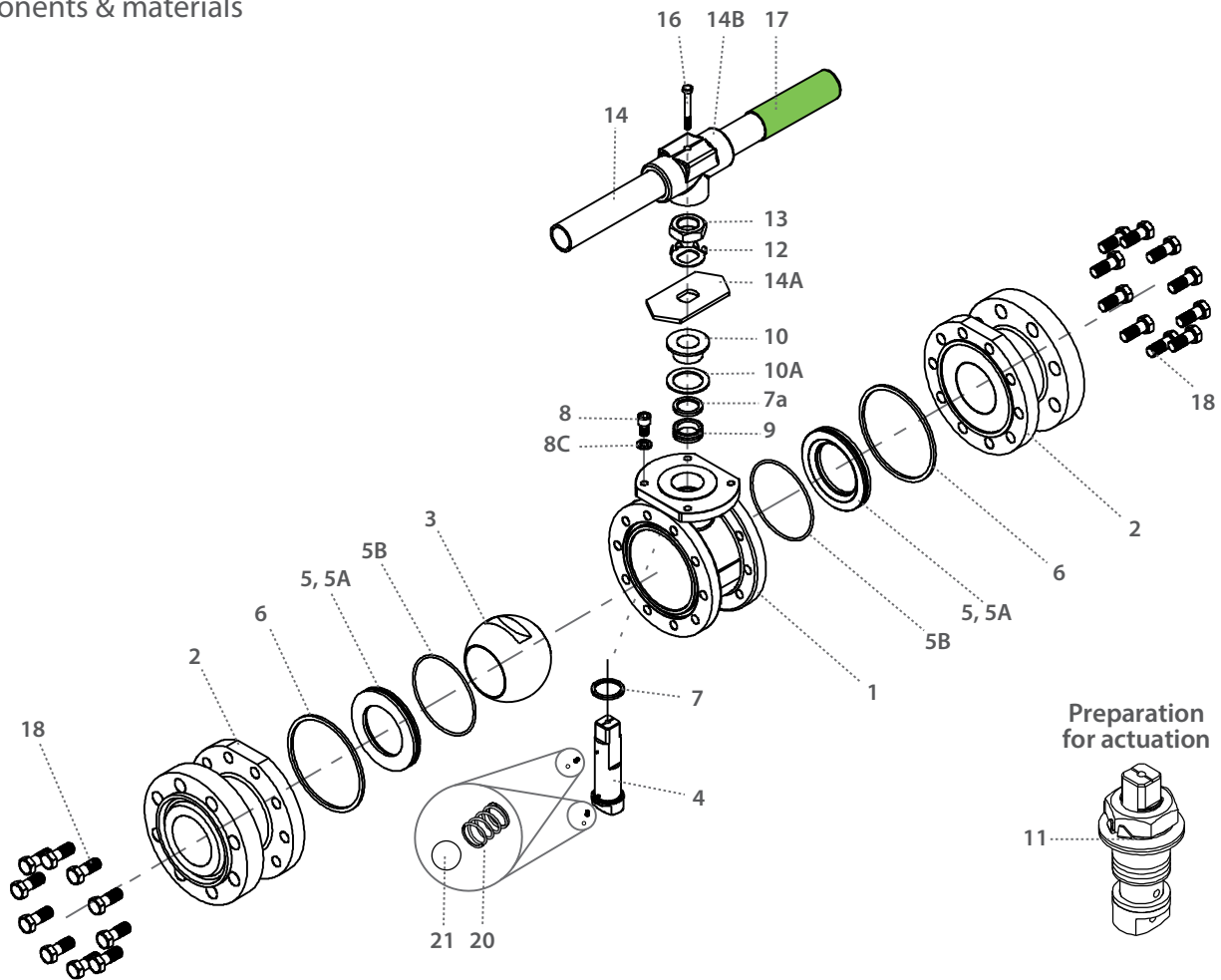
Std. port	Unit	Ball port	A (RF)	A (RTJ)	B	C	D	H	S	W	M	M-DD	N	P	Q	F	TxL	Weight kg/lb	Kv Cv	
DN50	mm	51.00	292.10	292.15	75.00	87.50	134.00	174.45	401.00	165.10	18.90	15.90	1"-14	16.70	22.70	(F10)	102.00	M10x12	14.20	430
2"	inch	2.01	11.50	11.62	2.95	3.44	5.28	6.87	15.79	6.50	0.74	0.63	UNS-2A	0.66	0.89		4.02		31.30	499
DN80	mm	80.00	355.60	358.65	110.00	126.50	195.90	256.60	916.00	209.55	28.45	23.75	1½"-12	26.20	35.20	(F12)	125.00	M12x16	37.00	1000
3"	inch	3.15	14.00	14.12	4.33	4.98	7.71	10.10	36.06	8.25	1.12	0.94	UNF-2A	1.03	1.39		4.92		81.60	1160
DN100	mm	100.00	431.80	434.85	135.00	142.40	211.90	273.00	916.00	273.05	28.45	23.75	1½"-12	26.20	35.20	(F12)	125.00	M12x18	58.00	1830
4"	inch	3.94	17.00	17.12	5.31	5.61	8.34	10.75	36.06	10.75	1.12	0.94	UNF-2A	1.03	1.39		4.92		128.00	2123
DN150	mm	150.00	558.80	561.85	190.00	194.00	307.00	-	-	355.60	35.92	35.92	2"-8	40.00	46.50	(F14)	140.00	M16x18	126.00	4380
6"	inch	5.91	22.00	22.12	7.48	7.64	12.09	-	-	14.00	1.41	1.41	UN-2A	1.57	1.83		5.51		278.00	5081
DN200	mm	200.00	660.40	663.45	275.00	245.00	400.00	-	-	419.10	45.90	45.90	2¾"-8	50.00	55.00	(F16)	165.00	M20x28	314.00	8070
8"	inch	7.87	26.00	26.12	10.83	9.65	15.75	-	-	16.50	1.81	1.81	UN-2A	1.97	2.17		6.50		692.20	9361

<sup>(1)</sup> Due to high valve torque, pipe handle cannot be used. A manual gear or automation means should be used to operate the valve.



# Floating Ball 3 Piece

## Components & materials



Item	Description	Material specification	Qty.
1	Body	Acc. Ordering Code	1
2	Ends	Acc. Ordering Code	2
3	Ball	Acc. Ordering Code	1
4	Stem	Acc. Ordering Code	1
5*	Seat insert	Acc. Ordering Code	2
5A*	Seat housing	S. Steel	2
5B*	Seat seal	Graphite, PTFE	2
6*	Inner seal	Graphite, PTFE	2
7*	Stem thrust seal	PEEK, CF PEEK, PCTFE	1
7a*	Anti-abrasion ring	PEEK, CF PEEK, PCTFE	1
8	Stop pin	S. Steel	1
9*	Stem seal	CF PTFE, TFM	1
10	Follower	S. Steel	1
10A*	Slide bearing	S. Steel	1

Item	Description	Material specification	Qty.
11	Disc spring	S. Steel	2
12	Stem nut	S. Steel	1
13	Tab lock washer	S. Steel	1
14**	Handle	S. Steel	1
14A	Stop plate	S. Steel	1
14B	Wrench head	S. Steel	1
16	Wrench bolt	S. Steel	1
17	Sleeve	PVC	1
18	Body bolts	S. Steel	20-24-32
20	Anti-static spring	S. Steel	2
21	Anti-static plunger	S. Steel	2
23	Tag (not shown)	S. Steel	1

\* Repair kit components

\*\* Gear operator should be used for size 6" DN150 and above (handle components are not included)