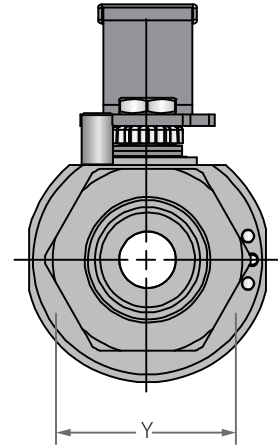
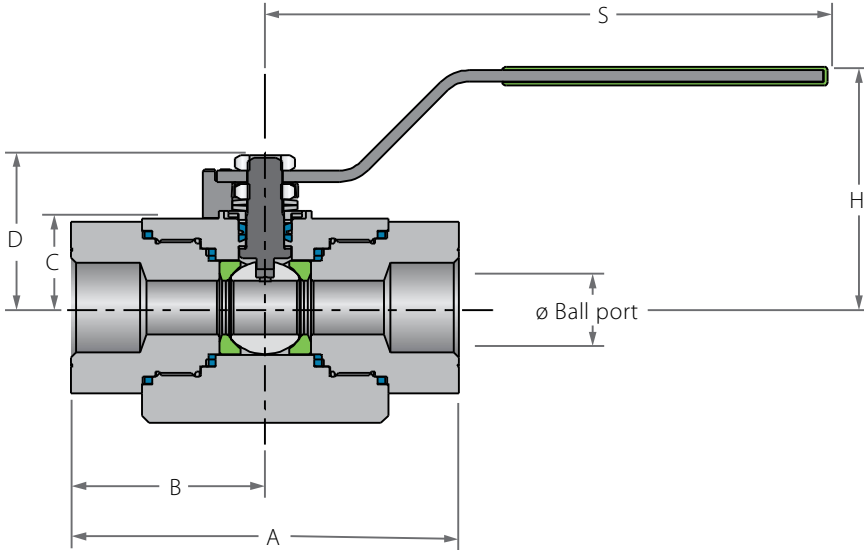
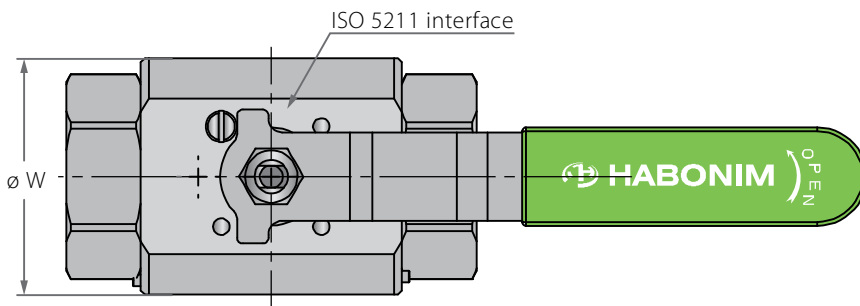
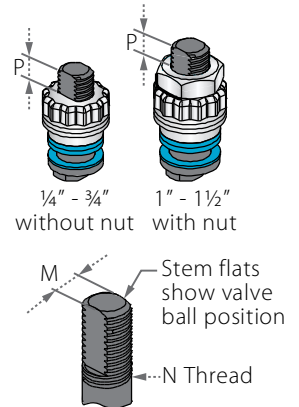


High Pressure Floating Ball 3 Piece

Valve dimensions



Preparation for actuation

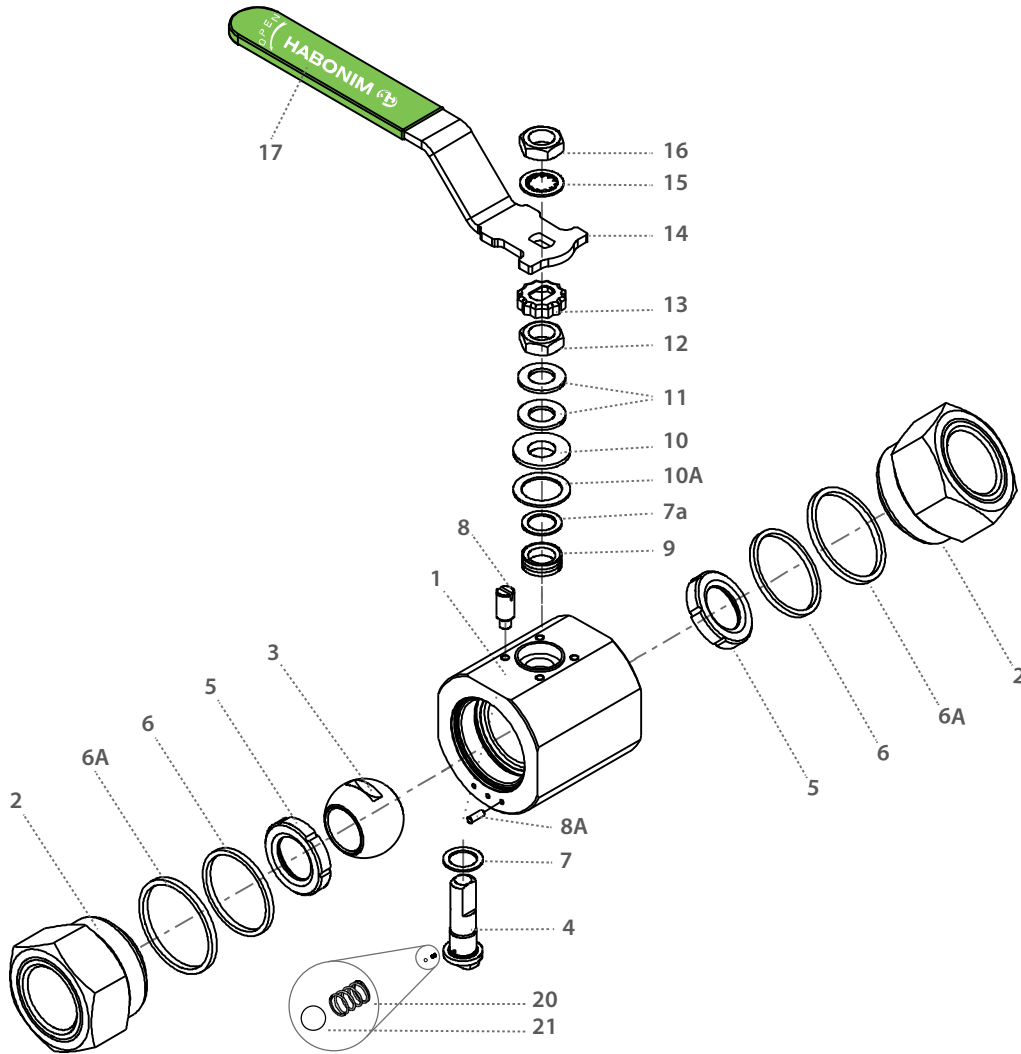


Std. port	Full port	Unit	Ball port	A	B	C	D	H	M	N	P	W	S	Y	weight kg/lb	kv cv
	DN8	mm	11.15	91	45.5	21.50	37.90	42.1	5.54	1/2" UNF	11.1	54	179	45	0.8	4.3
	1/4"	inch	0.44	3.58	1.79	0.84	1.49	1.66	0.22		0.43	2.12	7.05	1.77	1.76	5.00
DN15	DN10	mm	11.15	91	45.5	24.50	37.90	42.1	5.54	3/8" UNF	11.1	54	179	45	0.8	6.9
1/2"	3/8"	inch	0.44	3.58	1.79	0.84	1.49	1.66	0.22		0.43	2.12	7.05	1.77	1.76	8.00
DN20	DN15	mm	14.3	104.25	52.12	23.90	40.30	45	5.54	1/2" UNF	11.1	62	179	60	1.27	10
3/4"	1/2"	inch	0.56	4.10	2.05	0.94	1.59	1.77	0.22		0.43	2.44	7.05	2.36	2.79	12.00
DN25	DN20	mm	20.6	126.6	63.3	37.90	55.60	60.3	7.54	3/4" UNF	15.4	84.5	193	77	2.1	28
1"	3/4"	inch	0.81	4.98	2.49	1.49	2.19	2.37	0.29		0.60	3.32	7.60	3.03	4.63	32.00
DN32	DN25	mm	25.4	137.25	68.62	42.50	60.2	68.7	7.54	1" UNF	15.4	93	193	85	2.9	49
1 1/4"	1"	inch	1.00	5.40	2.70	1.67	2.37	2.70	0.29		0.90	3.66	7.60	3.34	6.39	57.00
DN40	DN32	mm	31.8	161.94	80.97	43.55	73.00	81.1	8.7	1 1/4" UNF	19.6	99	287	95	4.8	69
1 1/2"	1 1/4"	inch	1.50	6.37	3.18	1.71	2.87	3.19	3.19		0.77	3.89	11.30	3.74	10.58	80.00



High Pressure Floating Ball 3 Piece

Components & materials



Item	Description	Material specification	Qty.
1	Body	Acc. Ordering Code	1
2	End	Acc. Ordering Code	2
3	Ball	Acc. Ordering Code	1
4	Stem	Acc. Ordering Code	1
5*	Seat	Acc. Ordering Code	2
6*	Inner seal	Acc. Ordering Code	2
6A*	Outer seal	Acc. Ordering Code	2
7*	Stem thrust seal	PEEK, CF PEEK, PCTFE	1
7a*	Anti-abrasion ring	PEEK, CF PEEK, PCTFE	1
8	Stop pin	S. Steel	1
8A	Dowel Pin	S. Steel	1
9*	Stem seal	CF PTFE, TFM	1
10	Follower	S. Steel	1

Item	Description	Material specification	Qty.
10A*	Slide bearing	S. Steel	1
11	Disc spring	S. Steel	2
12	Stem nut	S. Steel	1
13	Locking clip	S. Steel	1
14	Handle	S. Steel	1
15	Serrated washer	S. Steel	1
16	Handle nut	S. Steel	1
17	Sleeve	PVC	1
20	Anti static spring	S. Steel	1
21	Anti-static plunger	S. Steel	1
23	Tag (not shown)	S. Steel	1

* Repair kit components